



Turmares

IBERIAN ORCA (*Orcinus orca*) PHOTO-IDENTIFICATION CATALOGUE

Curator: Dra. Ruth Esteban
Madeira Whale Museum



Santander Fundación

FriendSHIP:orcas Project

ORCA ANATOMY

The orca (*Orcinus orca*) is a medium-sized cetacean, adults can measure between 4 and 9 metres maximum. The average size of the Iberian orca is smaller than other populations, being between 4 and 6 metres.

They have a contrasting black and white colouring. In the case of neonates, the light parts show an ochre or orange tone, and light brown in the dark part, which disappears with age. Along the body, they have different patches that can vary in shape and colour, and can even identify different populations.

Description

Orcas have a voluminous body. Blunt head with a slight beak in the upper anterior region, formed by the jaws and premaxillae. Mandible slightly recessed at the chin with respect to the jaws.

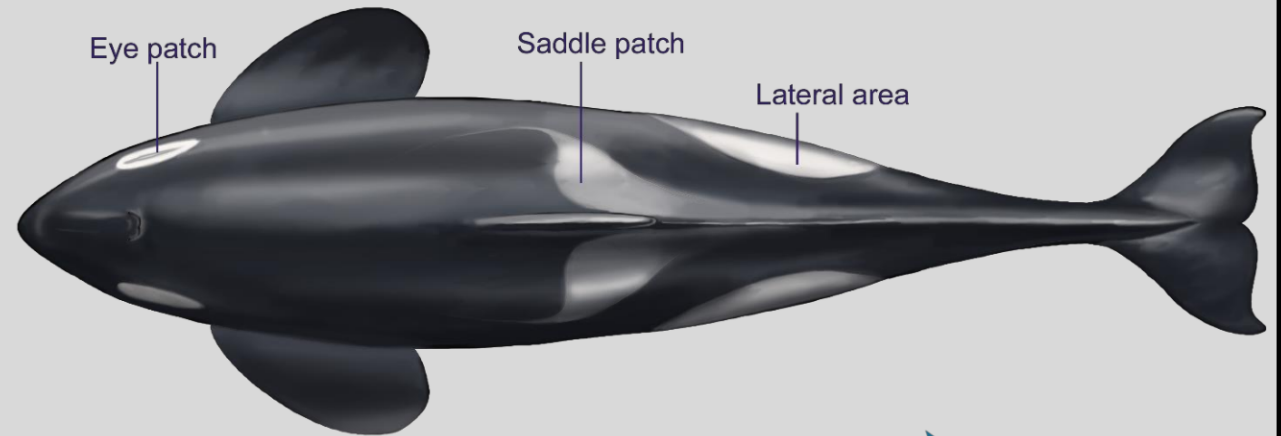
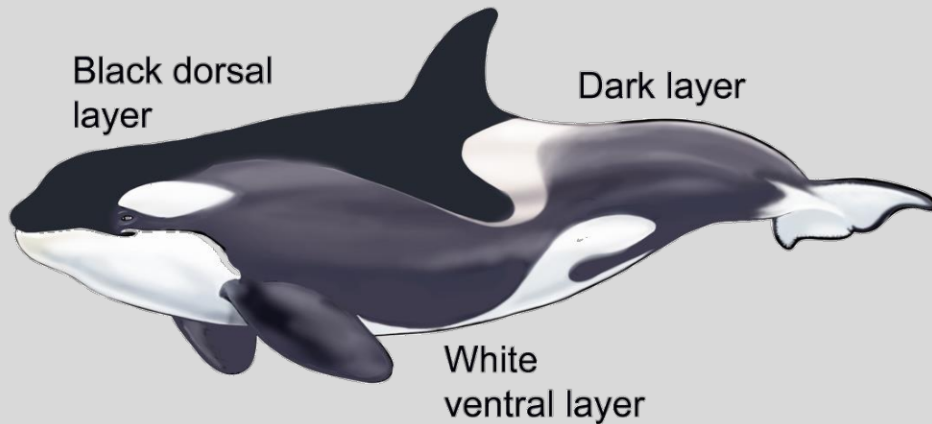
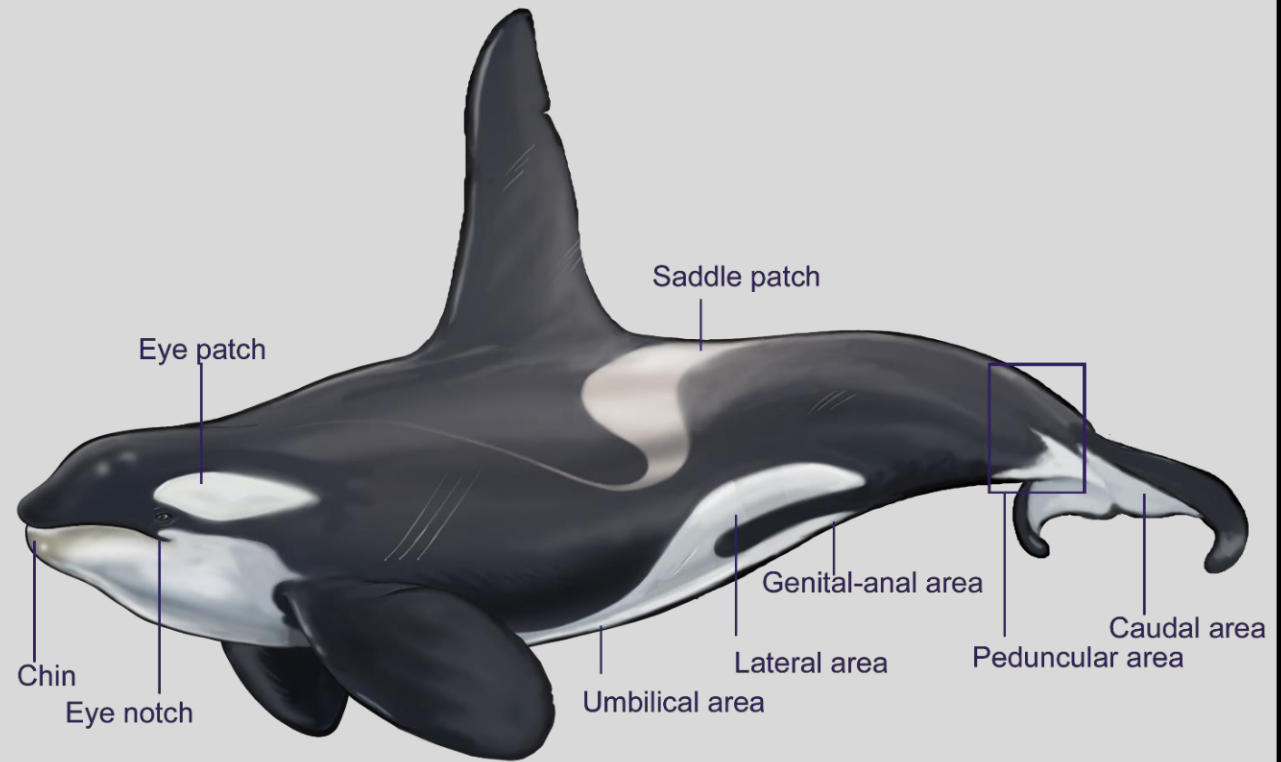
They show a marked sexual dimorphism in the dorsal fin, being tall and straight in males, and falcate and smaller in females. Pectoral fins are thick, broad and oval, with rounded edges, which are also bigger in males. The caudal fin is large and with a central commissure, between the lobes, very marked. In males, the distal ends of the caudal fin are curved downwards.



Dorsal-lateral colouring pattern

Orcas usually have a **black dorsal cape** that runs from the head to the saddle and down the sides. Behind and below the saddle, they have a **dark cape** that runs down the sides and only joins in the ventral area at the caudal peduncle. Iberian orcas do not show much contrast between one layer and the other.

In the posterior region of the base of the dorsal fin there is a grey spot called **saddle patch**, the name is derived from the appearance and position of the seat used by a rider on the back of a horse, also called saddle. It has a sinusoid shape, being wider in the dorsal region, narrowing in the lower area, showing a rim that is directed towards the front of the body. In most individuals of Iberian orcas, the saddle continues with a thin curved line that crosses the flank and goes towards the eye. If the orca is viewed from above, this spot is shaped like a Y.

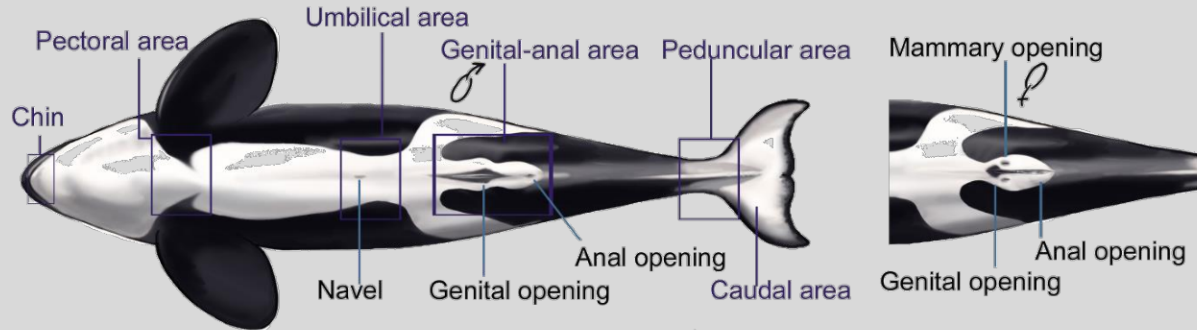


Ventral colouring pattern

The white ventral patch starts under the corner of the mouth and the chin. It narrows in the pectoral area and runs backwards to the **umbilical area** where it narrows again. It then extends upwards and backwards and elongates to the **genital-anal area**.

The **genital-anal area** is a continuation of the ventral white patch, where it surrounds the **genital** and **anal openings** forming a trident by dividing into three lobes ascending laterally on each flank and running backwards, the **lateral area**. Over the **genital**, **anal** and **mammary openings** are black spots that enhance the definitive distinctiveness.

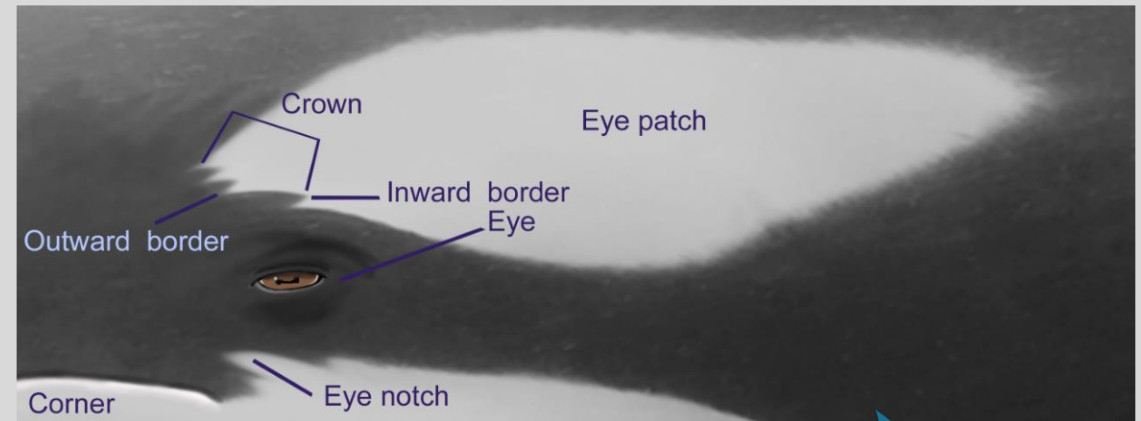
The **caudal area**, is the ventral part of the caudal fin which is white, except for the posterior edge, which is black, as well as the end of the peduncle or **peduncular area**.



Eye patch

Behind and above each eye is the **eye-patch**, consisting of a white elliptical or oval-shaped element, elongated lengthwise and variable in appearance. In its anterior part there are occasionally uneven borders with inward edges (black tips towards the white oval) or outward edges (white tips towards the outside of the oval), the whole of these tips is called the **crown**. Both the general shape of the eye-patch and the number, size and shape of bumps can help to identify the individual, since they remain practically unchanged throughout life.

Under each eye, in its anterior part, there is an **eye notch** which may also have unequal edges and therefore may serve as a secondary distinguishing feature between individuals.



THE CATALOGUE

This catalogue identifies the orcas observed in the waters of the Iberian Peninsula. Images obtained between 1999 and 2023 have been analysed, but only from 2010 onwards the photographic coverage is annual and homogeneous. For this reason we do not include individuals, which we know died earlier than 2010, especially calves.

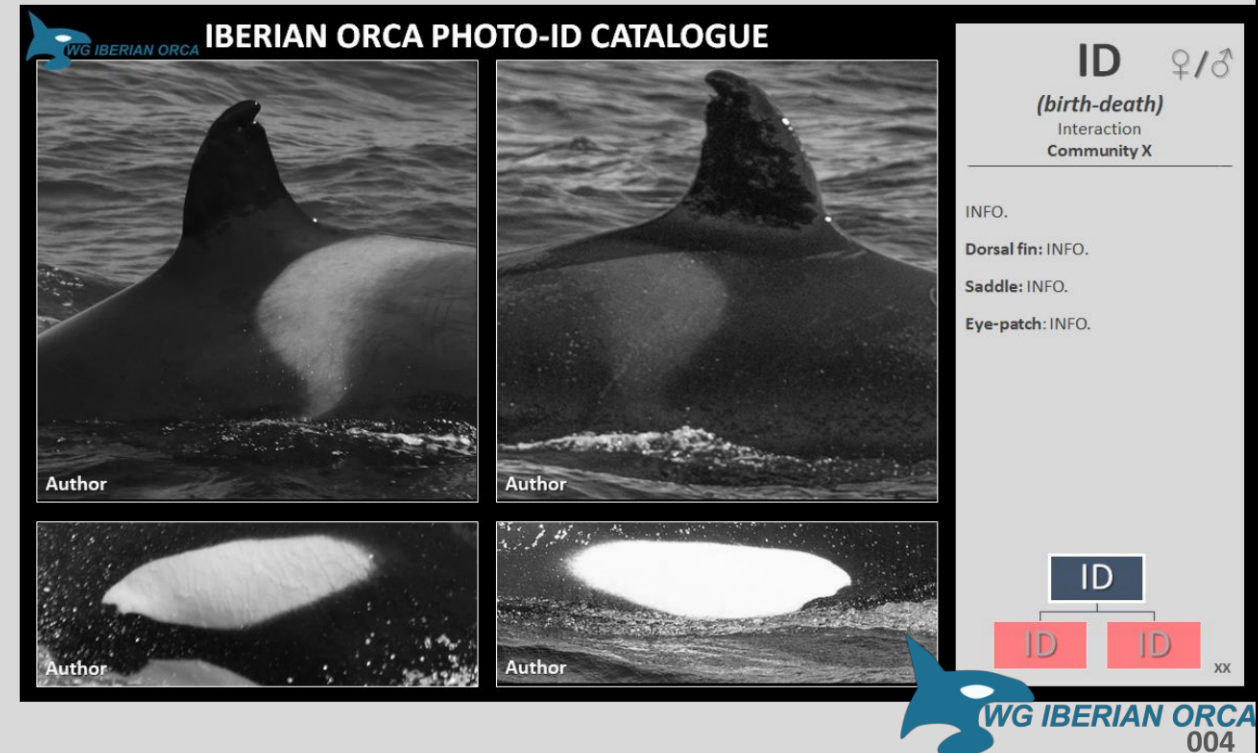
All available characteristic parts have been used, for the identification of each individual. The dorsal fin and the saddle are the easiest to photograph, as they are out of the water for a longer time. For the **dorsal fin** we used the shape and presence of nicks or cuts, for the **saddle** the shape or presence of scratches (Bigg 1982). Most of these marks are caused by other orcas, the bite scratches are called tooth rakes or "rake". As secondary identifying characteristics, **eye-patches** were used, when available.

Each individual has been assigned a unique **identification** (ID) number composed of the letter of its community (based on known genealogical relationships, or animals seen together over several years) followed by three unique digits within each community. Next to the ID is the sex of the individual, when known. Below, the date of birth and death, known or estimated (~), giving a one-year margin to the last time it was observed. Followed by its distinctive behaviour: whether the animal interacts with the longline tuna fishery in the Strait of Gibraltar, and/or whether it interacts with sailing vessels. In addition to a description of the most identifying characteristics of each individual, if necessary a distinction is made between right (R) and left (L) sides.

The genealogical relationship is detailed at the bottom, where the animals shown in red are individuals believed to be dead, and when interacting with sailboats, their ID is underlined and in bold. The author entity of each image is indicated in its left corner. Preceding each community is detailed knowledge about it.

Background information

The catalogue was compiled with the collaboration of 32 organisations and more than 27 people. A total of 21,000 images were analysed, from which 231 were selected, which form part of this catalogue and define a total of 66 individuals, of which a maximum of 49 would be alive.



Legal consideration

The **copyright**, intellectual property and authorship of the images in this catalogue belong to their authors, so they cannot be used individually without their express authorisation. The entire catalogue, its reference and plates are licensed under a Creative Commons Attribution-Share Alike 3.0 Unported License.



Acknowledgement — You must properly acknowledge authorship, provide a link to the licence and indicate if changes have been made. You may do so in any reasonable manner, but not in a way that suggests that you have the licensor's support or receive it for your use.

Sharing - If you remix, transform or create from the material, you must disseminate your contributions under the same licence as the original.

Cite us:

Esteban, R. 2023. IBERIAN ORCA (*Orcinus orca*) PHOTO-IDENTIFICATION CATALOGUE.
Friendship-orca Project, Fundación Santander-CEMMA-GTOA. 70 pp.
<https://www.orcaiberica.org/catalogo>

References

- Aguilar, A., Grau, E. (1998). Orca *Orcinus orca* (Linnaeus, 1758). En: Blanco, J. C. *Mamíferos de España*, Vol. II. Ed. Geoplaneta, Barcelona.
- Bigg, M. (1982) An assessment of killer whale (*Orcinus orca*) stocks off Vancouver Island, British Columbia. Report of the International Whaling Commission 32, 655–666.
- Dahlheim, M. E., Heyning, J. E. (1998). Killer whale *Orcinus orca* (Linnaeus, 1758). Pp: 281-309. En: Ridgway, S.H., Harrison, R. (Eds.). *Handbook of Marine Mammals, Volume 6: The Second Book of Dolphins and Porpoises*. Academic Press, Orlando.
- Ford, J. K. B. (2002). Killer Whale *Orcinus orca*. Pp.: 650-657. En: Perrin, W. F., Würsig, B., Thewissen, J. G. M. (Eds.). *Encyclopedia of marine mammals*. 2nd Edition. Academic Press, London.
- Samarra, F.I.P., Esteban, R., (2022). Killer Whale *Orcinus orca* (Linnaeus, 1758), in: Hackländer, K., & Zachos, F.E. (Eds.), *Handbook of the Mammals of Europe*. (pp.1–34). https://doi.org/10.1007/978-3-319-65038-8_100-1.

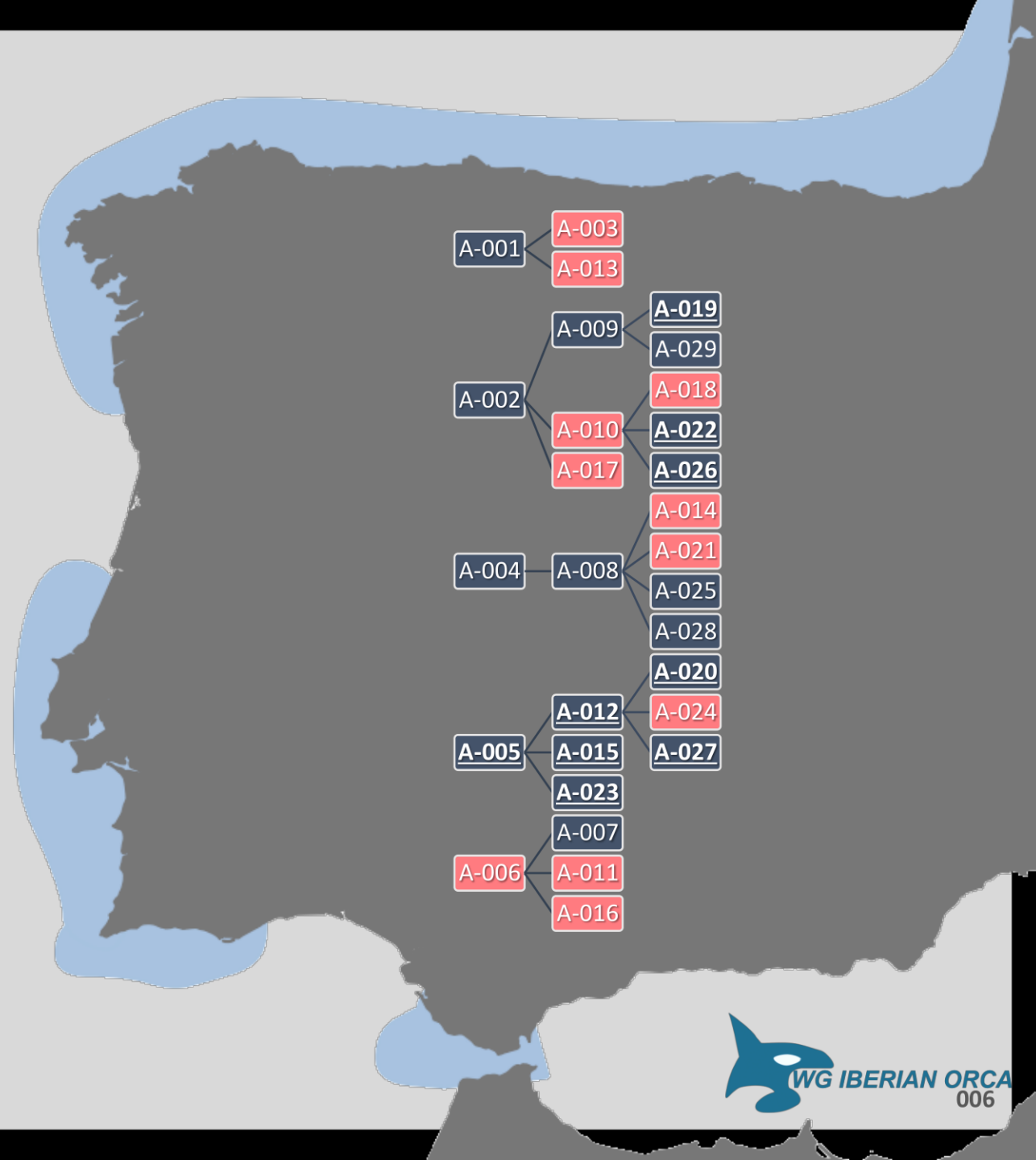
Community A

It is one of the longest known orca communities in the Strait of Gibraltar, interacting with the tuna fishery of the Strait since at least the beginning of the century. It is made up of different matriline, all of which are related.

They are usually seen in the area of the Strait of Gibraltar between spring and summer. This community is regularly seen in southern Portugal, Algarve. They have also been sighted along the northern Iberian coast.

Some of the individuals that have been interacting with sailboats since 2020 belong to this community, especially the A-005 matriline, where all its individuals interact with sailboats. Then there are some juveniles that have mainly been seen interacting with small motor boats, especially in the Strait of Gibraltar (A-019, A-022, A-026).

This community is closely related to Community B, in fact they are often sighted together.

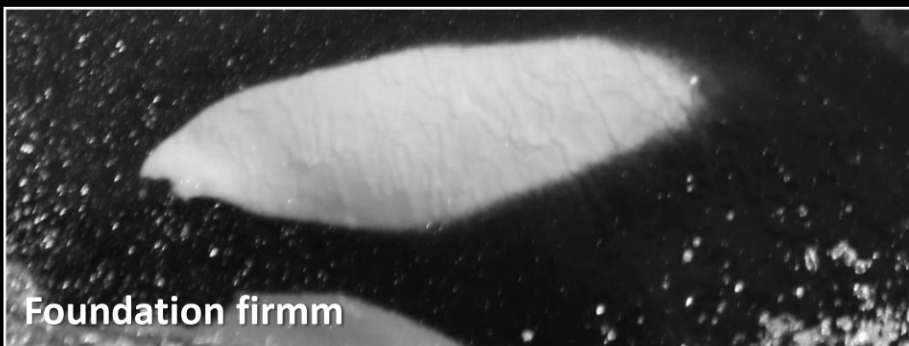




Foundation firmm



Turmares



Foundation firmm



Turmares

A-001



(~1975-)

Interact with fishing boats

Community A

Adult female. It is an emblematic orca of the Strait, as it is one of the longest-lived, it is believed that it is currently in menopause.

Unfortunately none of their known offspring have survived, including calves before 2010.

Dorsal fin: large indentation in the upper area of the trailing edge.

Eye-patch: one outward border in each side.

A-001

A-003

A-013



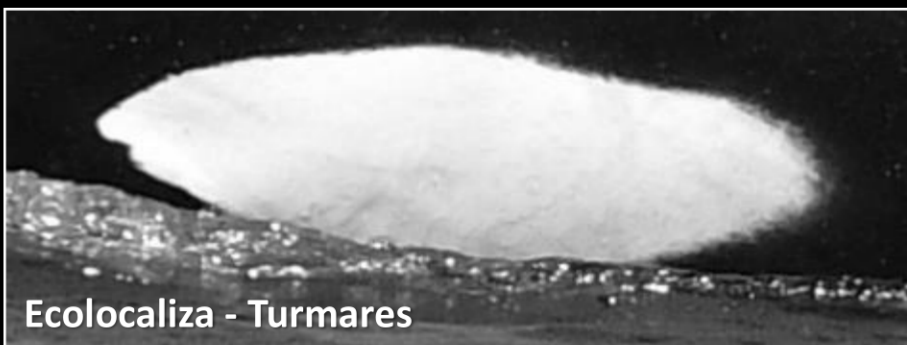
CATÁLOGO FOTO-ID ORCA IBÉRICA



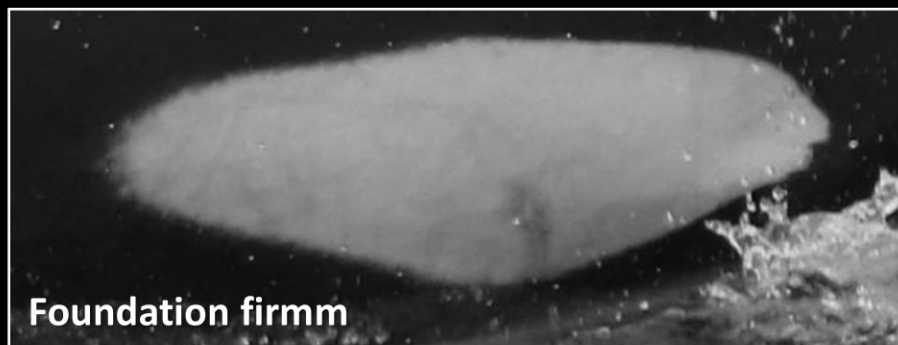
Foundation firmm



Turmares



Ecolocaliza - Turmares



Foundation firmm

A-002



(~1980-)

Interact with fishing boats

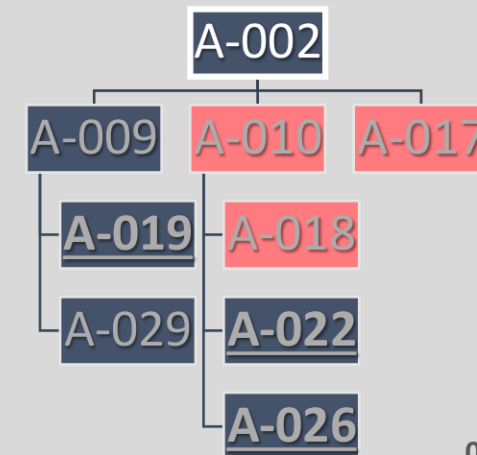
Community A

Adult female, which may be in menopause, having had her last known offspring in 2013.

Some of her granddaughters have been seen interacting with small boats since 2021.

Dorsal fin: notch in the middle area of the trailing edge.

Eye-patch: one inward border in each side.





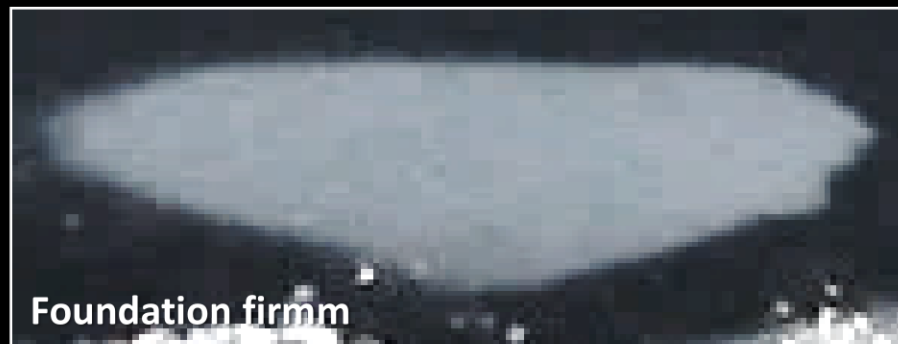
Annemieke Podt



Foundation firmm



Annemieke Podt



Foundation firmm

A-003



(~1984-~2014)

Interact with fishing boats

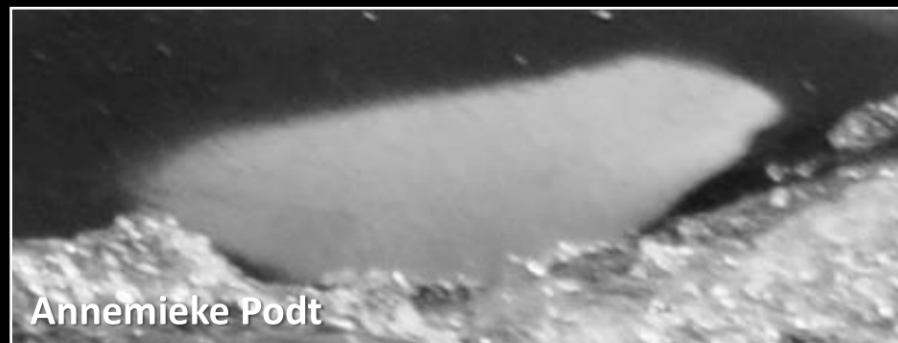
Community A

One of the most iconic adult males in the Strait. This male has not been observed since at least 2013.

Dorsal fin: small notch at the tip and a slight curvature at the upper end.

Eye-patch : both are similar, they present two outward edges.





A-004

♀

(~1980-~2015)

Interact with fishing boats

Community A

A difficult to distinguish female. This female has not been observed since at least 2014.

Saddle patch: oval mark (R).

Eye-patch: an outward(L) and an inward (R) edge.

A-004

A-008

A-014

A-021

A-025

A-028



A-005

(~1992-)

♀

Interact with fishing and sailing boats

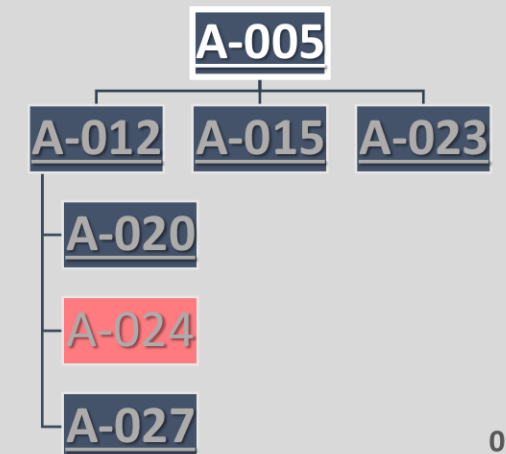
Community A

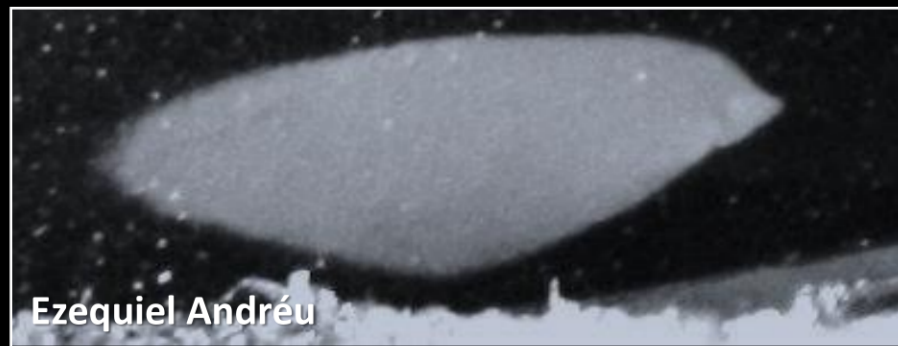
Adult female. Since 2020 all her offspring interact with sailboats and other vessels, she always stays away from boats.

Dorsal fin: unmarked.

Saddle patch: permanent scratches on both sides.

Eye-patch: an outward (R).





A-006



(~1986- ~2016)

Interact with fishing boats

Community A

Adult female. Seen interacting with tuna fishermen in the central waters of the Strait.

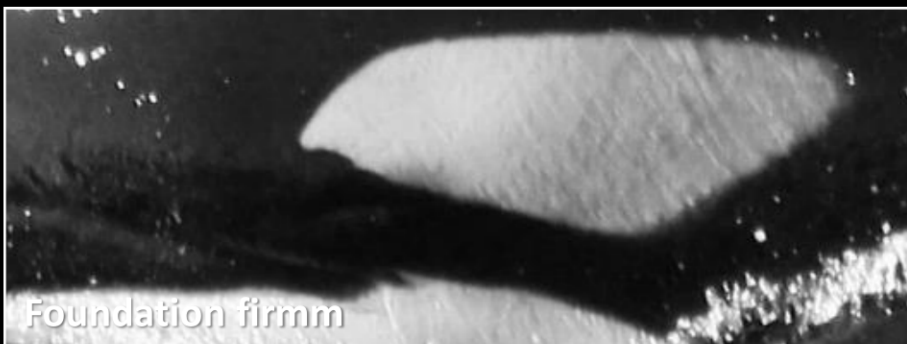
This female has not been observed since 2015.

Dorsal fin: diagonal cut at the tip.

Saddle patch: a dark horizontal line in the middle (R).

Eye-patch: two outwards (L), one outward (R).





A-007



(~1998-)

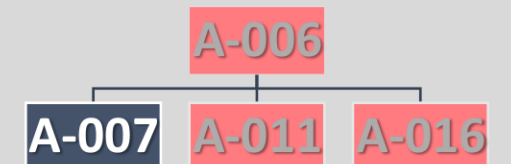
Interact with fishing boats
Community A

Adult male.

Dorsal fin: many markings being more prominent in the upper third of the trailing edge.

Saddle patch: has several scratches.

Aleta caudal: has a small notch.





A-008



(~1999-)

Interact with fishing boats

Community A

Relatively young adult female, had her first calf in 2011.

Dorsal fin: a small indentation at the tip of the dorsal.

Eye-patch: has an outward edge on both sides.

A-004

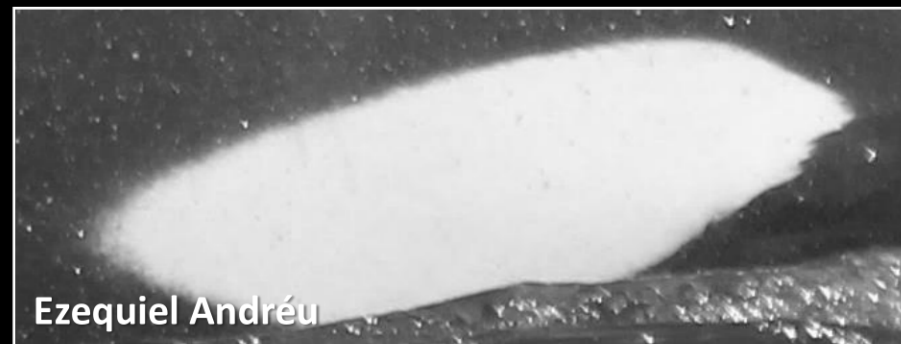
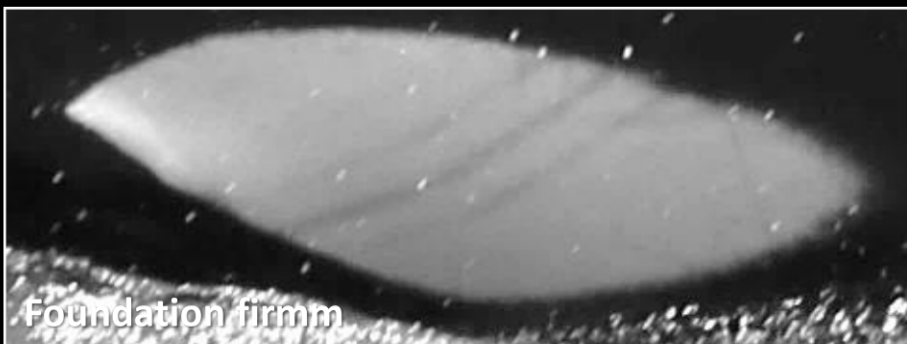
A-008

A-014

A-021

A-025

A-028



A-009



(~1996-)

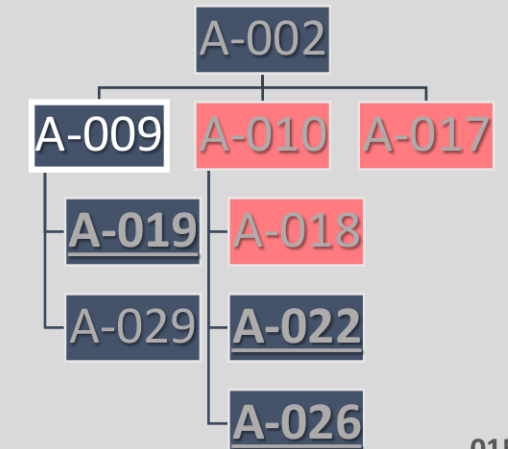
Interact with fishing boats

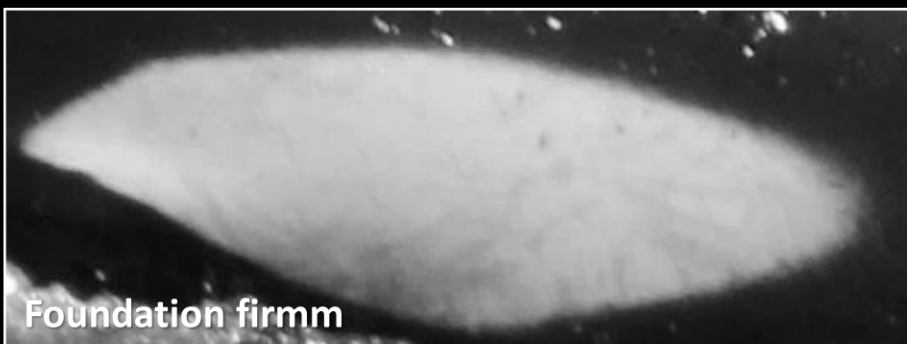
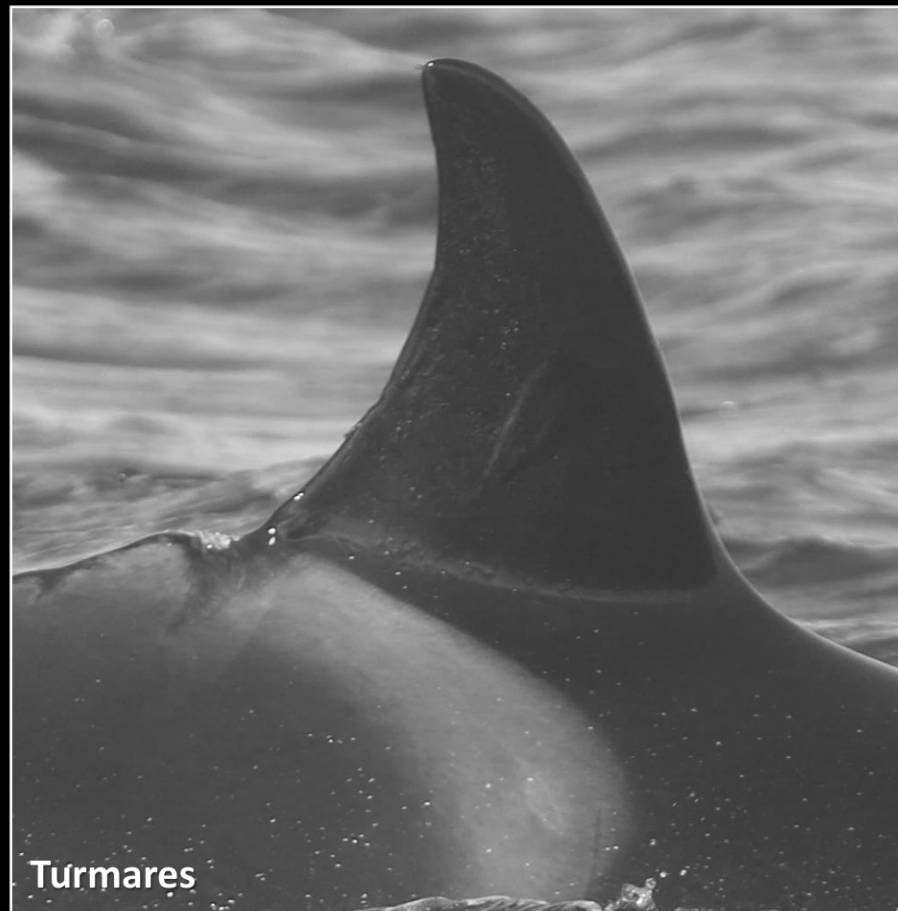
Community A

Relatively young adult female, she had her first calf in 2008, which unfortunately did not survive its first year of life (not included in the catalogue).

Saddle patch: rake-mark (L), permanent dark line towards 160 (R).

Eye-patch: small inwards (R), non-permanent rake-marks (L).





A-010



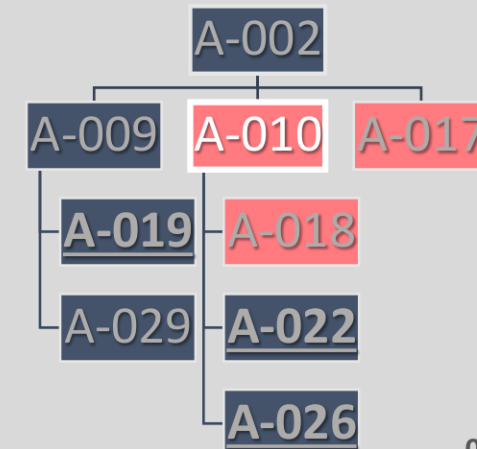
(~2002-2022)

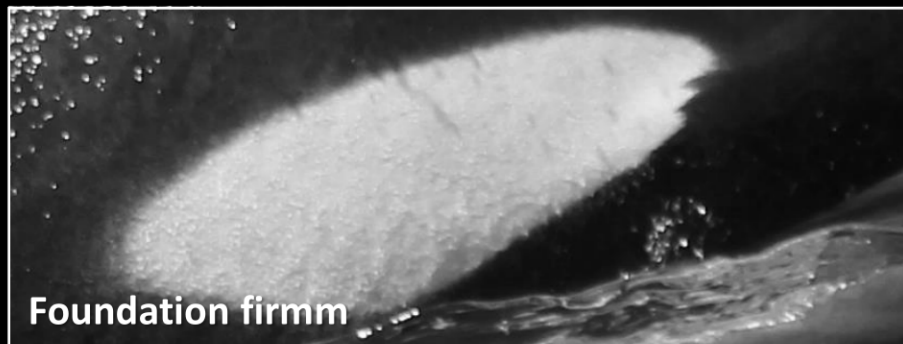
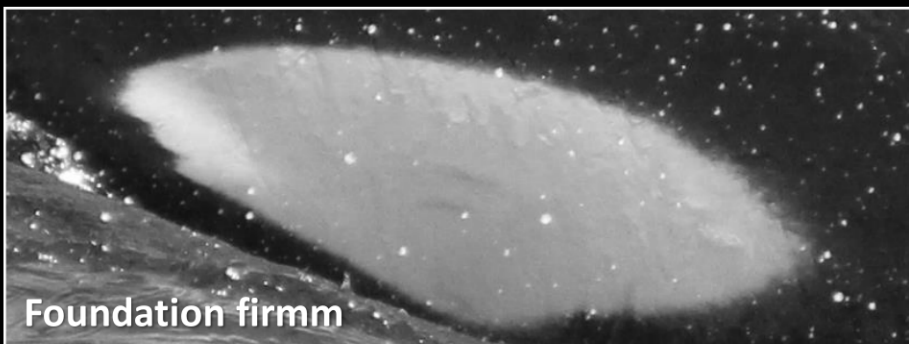
Interacted with fishing boats

Community A

Young adult female, she had her first calf in 2009. In 2015 she was observed with a large cut behind the dorsal fin, and with her right pectoral amputated. Stranded dead in 2022 in Algarve¹.

(1) RAAIg



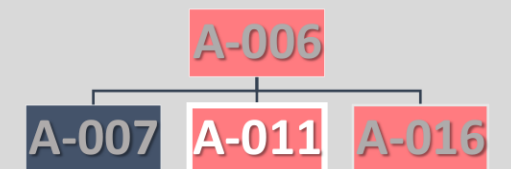


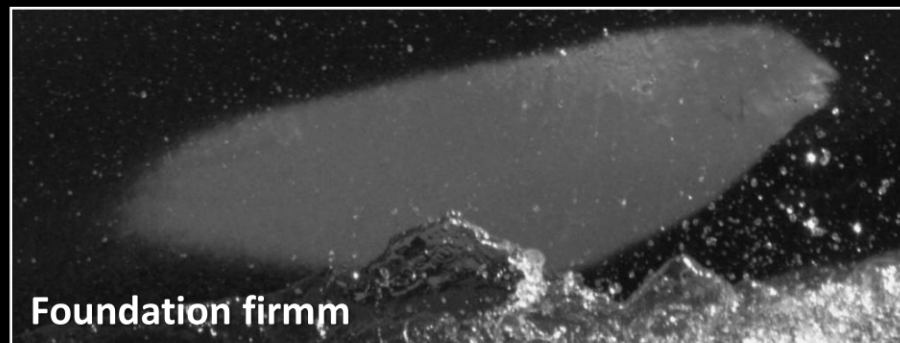
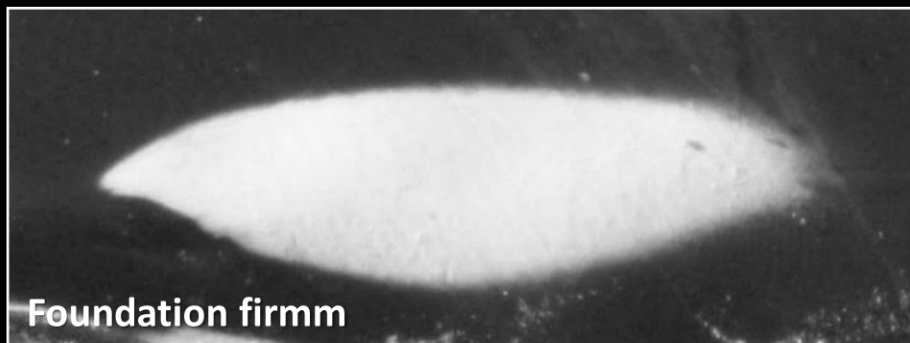
A-011 

(~2004-~2018)

Interact with fishing boats
Community A

Juvenile male. From 2011 to 2013 he had, what appeared to be, a satellite tag nail at the base of its dorsal fin, which snagged on longline fishing lines when interacting with fishermen, causing cuts along the dorsal. Not observed since 2017.





A-012



(2005-)

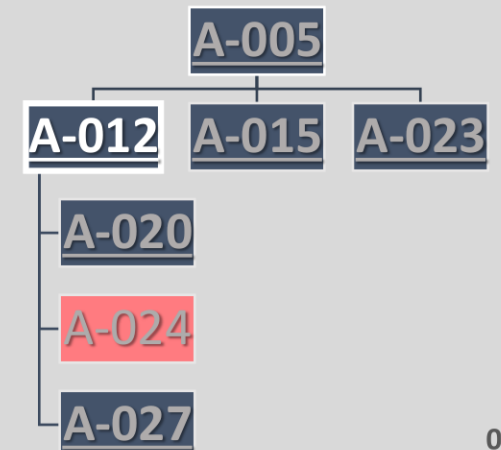
Interact with fishing and sailing
boats

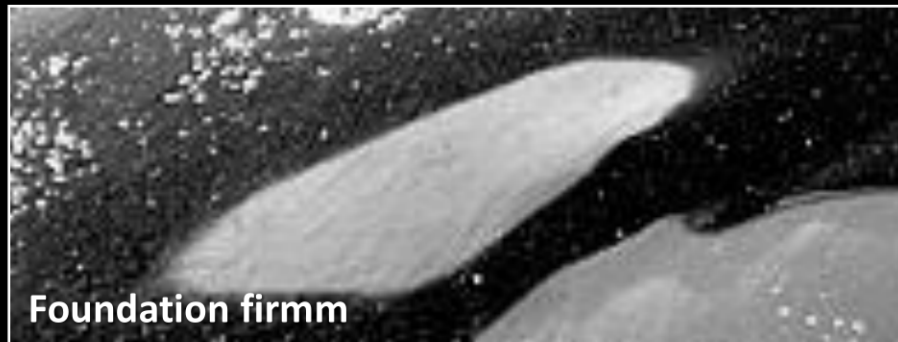
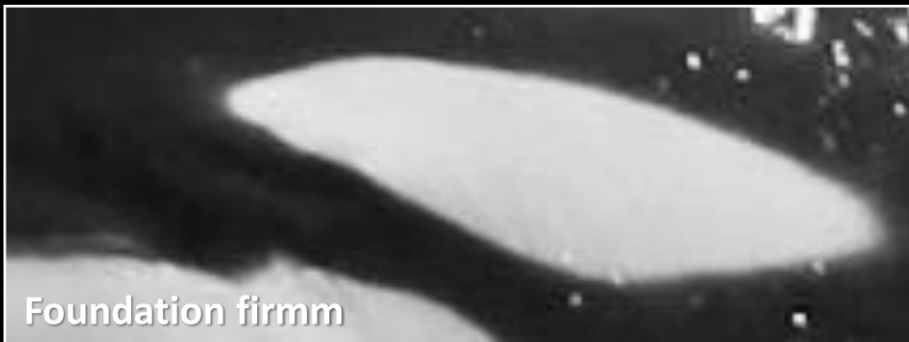
Community A

Adult female, she usually has quite a few marks from fishing lines along its body. She had her first calf in 2015. Since 2020 also interacts with sailboats.

Dorsal fin: notch in the upper third of the trailing edge.

Eye-patch: one onward (R) and one minuscule onward (L).





A-013

(2010-2015)

Interact with fishing boats
Community A

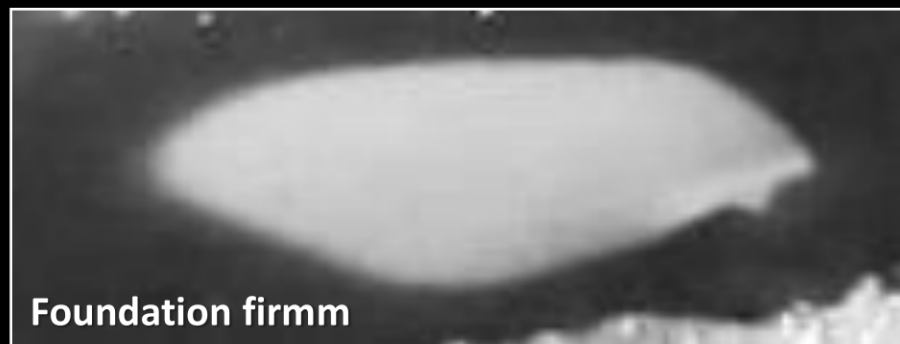
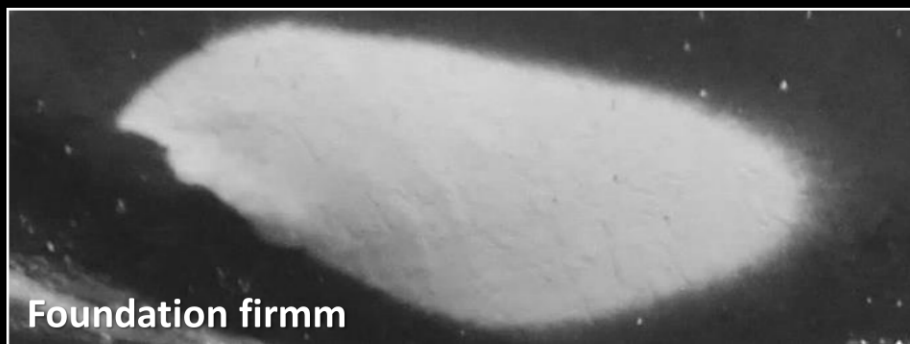
Young calf, last known descendant of A_001, found stranded dead in Portugal¹ in January 2015. Its main feature was a straight cut on the tip of its dorsal fin.

Dorsal fin: cut off tip.

Eye-patch: very similar, without uneven edges.

(1) Sociedade Portuguesa de Vida Selvagem





A-014

(2011-~2016)

Interact with fishing boats
Community A

First known offspring of A-008, unfortunately did not survive its first years of life.

Dorsal fin: two small notches in the upper third.

Eye-patch: fairly symmetrical, it has two outwards.

A-004

A-008

A-014

A-021

A-025

A-028



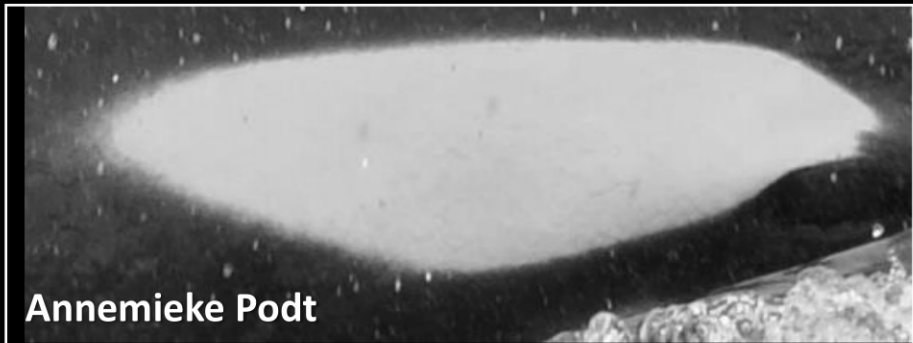
Foundation firmm



Foundation firmm



Turmares



Annemieke Podt

A-015 

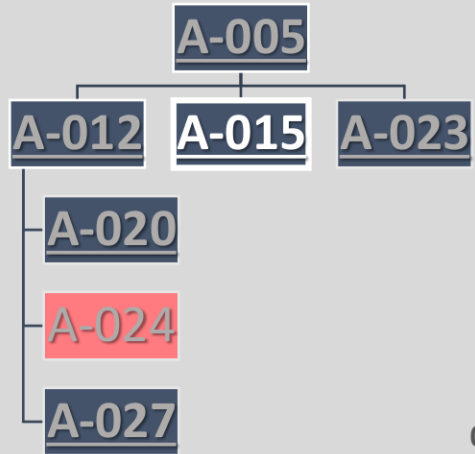
(2011-)

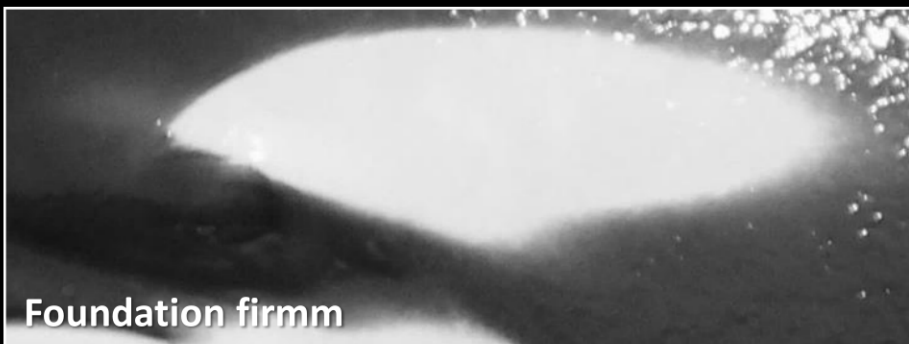
Interact with fishing and sailing
Community A

Young male, quite difficult to distinguish.

Saddle patch: superficial scratches (L) they are from, so they will disappear over time.

Eye-patch: has a small crown of inwards (R) and a miniscule inward (L).





A-016



(2012-~2020)

Interact with fishing boats

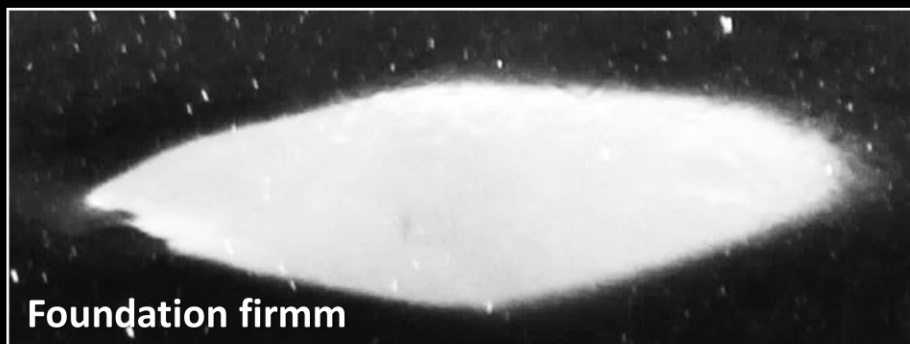
Community A

Young male, very difficult to distinguish.

It was observed for several years without its mother, in the company of the rest of its community, but has not been observed since 2019.

Eye-patch: outwards(R).





A-017

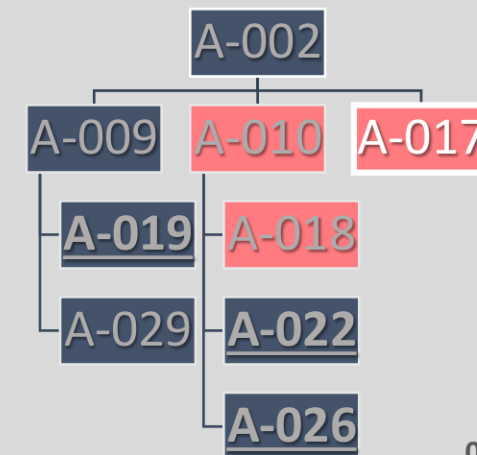
(2013-~2019)

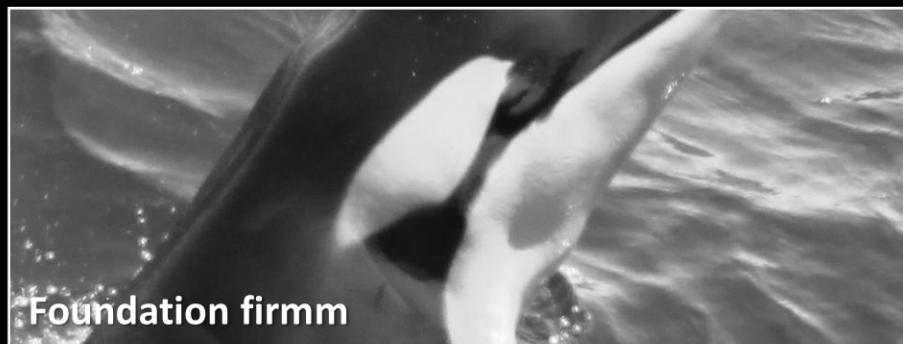
Interact with fishing boats

Community A

Young individual who did not reach adulthood. Last known descendants of A-002.

Eye-patch: an inward edge in both sides.





A-018

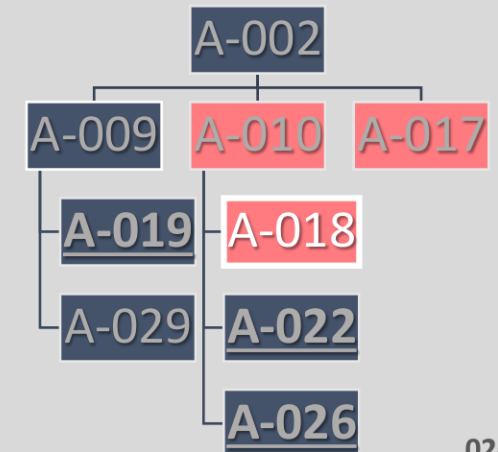
(2014-~2015)

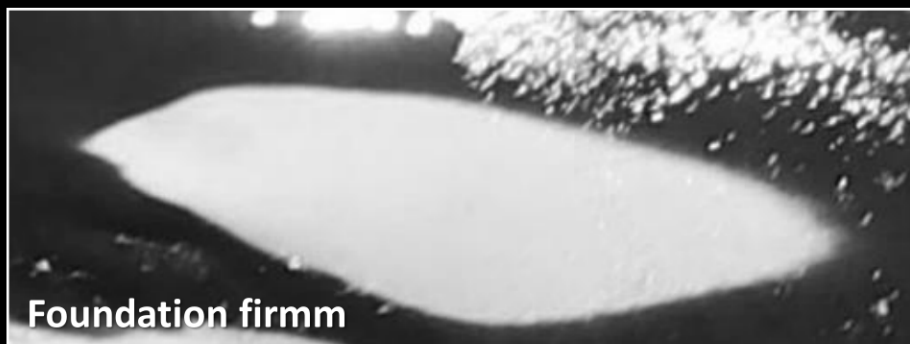
No interaction

Community A

The first known calf of A-010, it was observed as a neonate in 2014, accompanying its mother for a month, but last time seem was really thin.

Eye-patch: an outward edge in both sides.





A-019



(2014-)

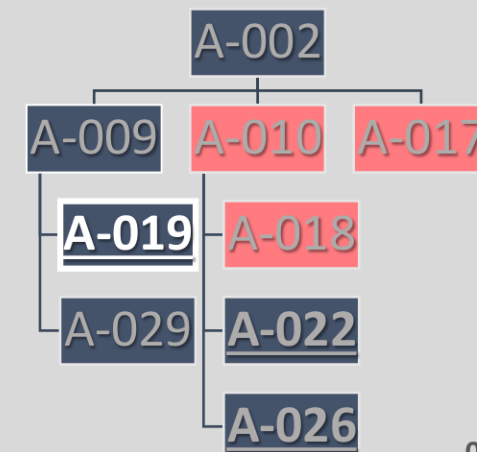
Interact with fishing and sailing
boats

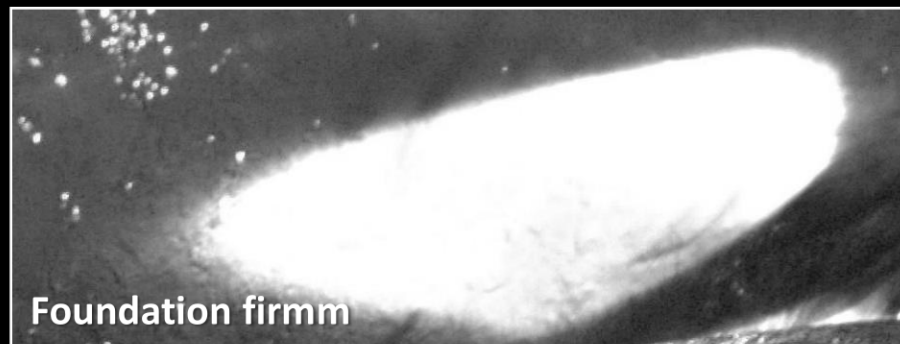
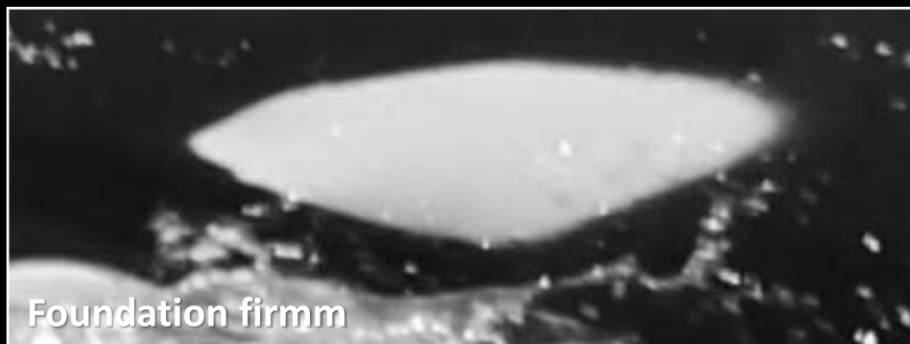
Community A

Young female.

Dorsal fin: Two marks in the upper third of the trailing edge.

Eye-patch: asymmetrical. It has a crown with an outward edge (R). A single outward edge (L).





A-020

(2015-)

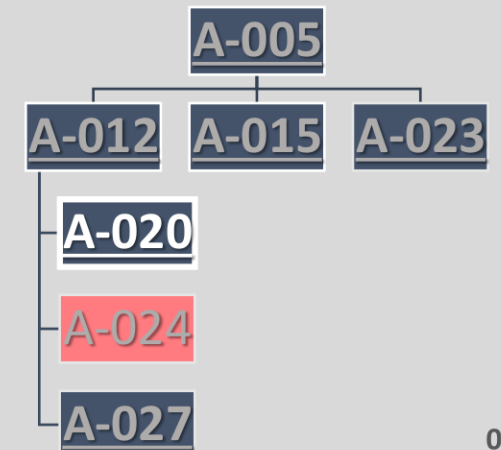
Interact with fishing and sailing
boats

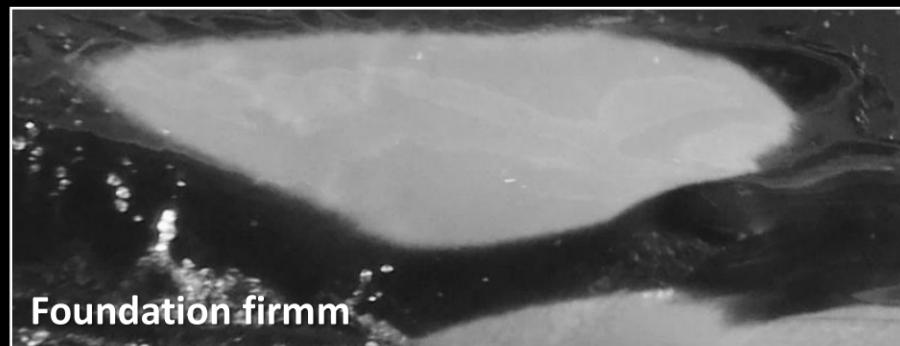
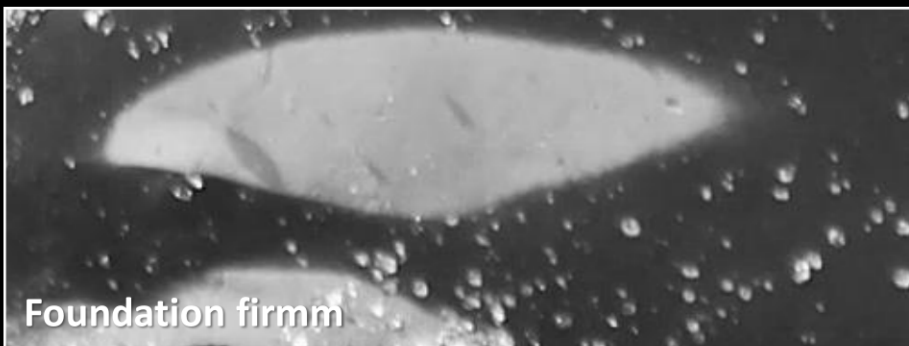
Community A

Young individual.

Dorsal fin: two small notches in the
upper third.

Eye-patch: fairly smooth, with only
minor irregularities.





A-021

(2015-~2016)

Interact with fishing boats
Community A

Young individual, who did not survive his first year of life.

Dorsal fin: small notches.

Eye-patch: fairly smooth, a small inward crown(R).

A-004

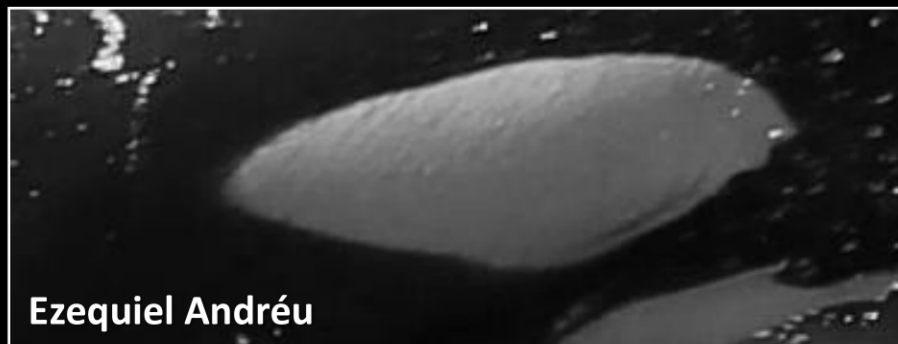
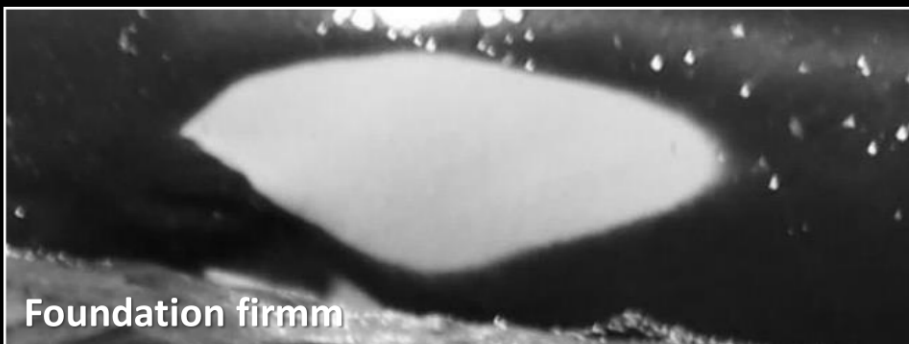
A-008

A-014

A-021

A-025

A-028



A-022

(2017-)

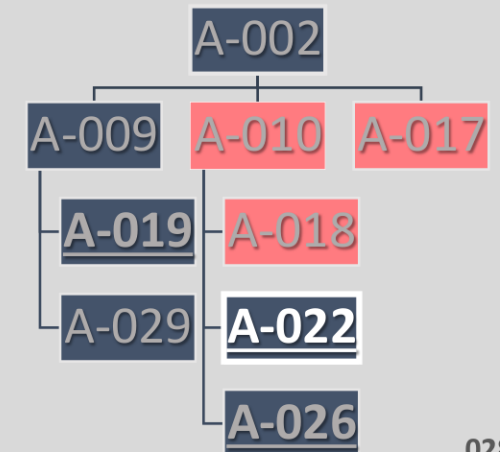
♀

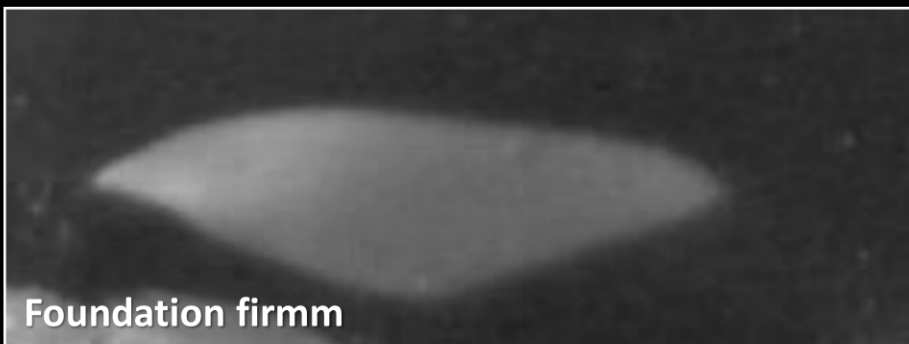
Interact with fishing and sailing boats

Community A

Juvenile female. Seen interacting with small vessels since 2021.

Eye-patch: large and wide, with several outward edges on both sides.





A-023

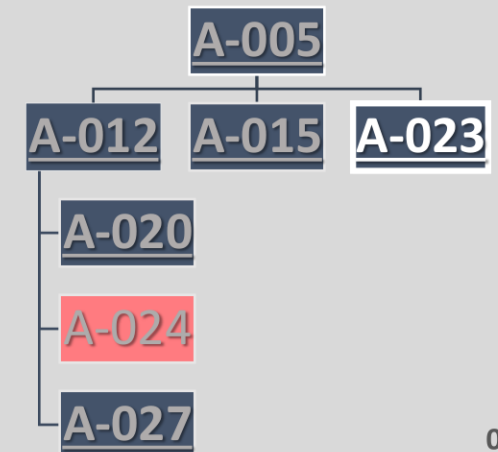
(~2017-)

Interact with fishing and sailing
boats

Community A

Young individual. Identified
interacting with sailboats.

Dorsal fin: two notches in the upper
third.





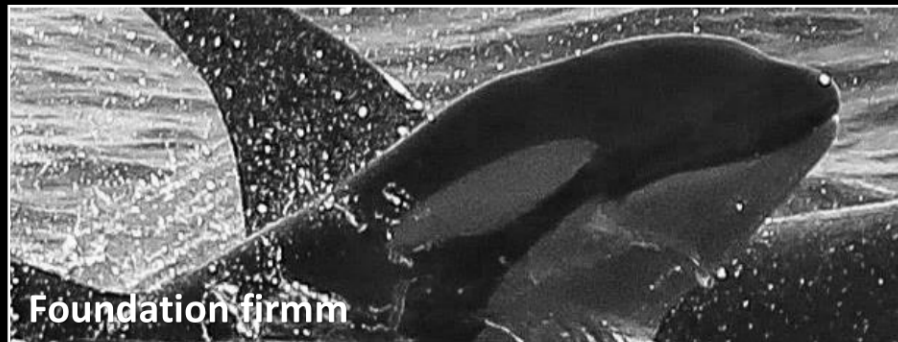
Foundation firmm



Foundation firmm



Turmares



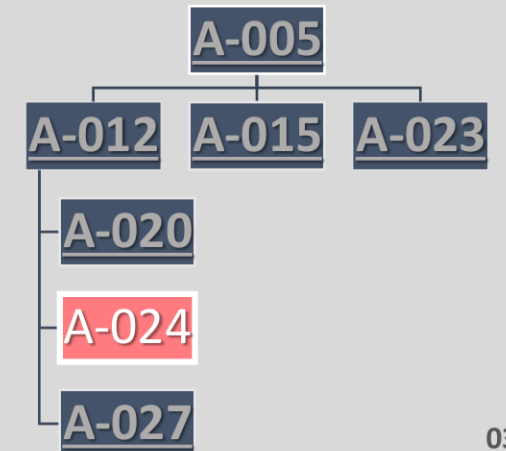
Foundation firmm

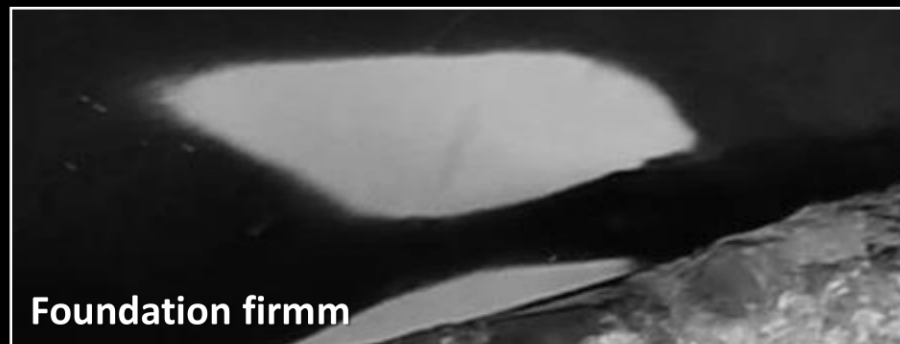
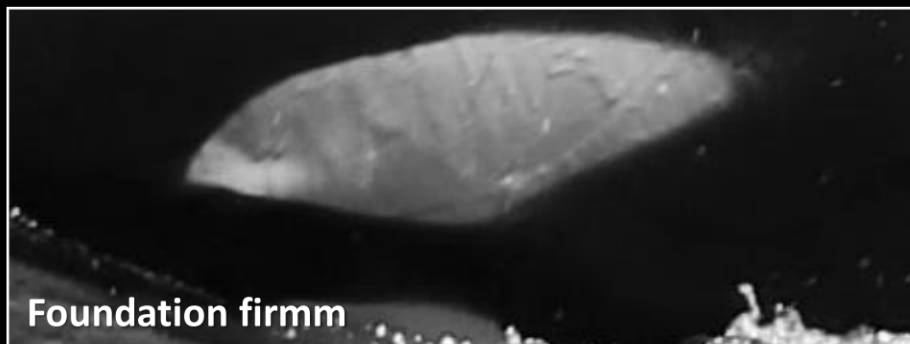
A-024

(2018-~2019)

No interaction
Community A

Neonate did not live beyond its first year of life. No dorsal fin markings or pronounced eye-patch irregularities.





A-025

(2018-)

Interact with fishing boats
Community A

Young individual.

Eye-patch: small inward (R).

A-004

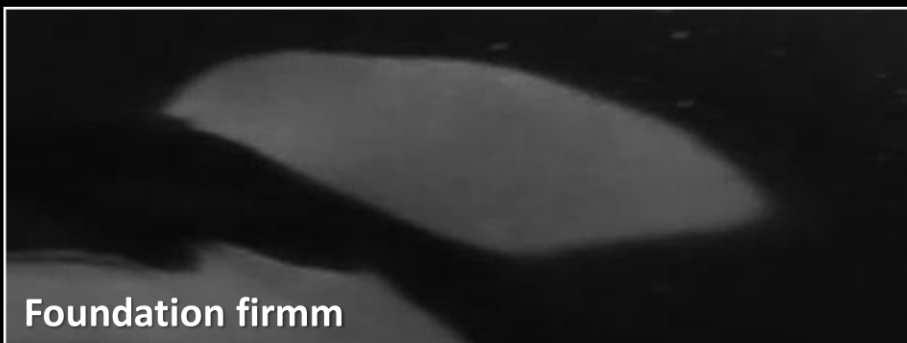
A-008

A-014

A-021

A-025

A-028



A-026

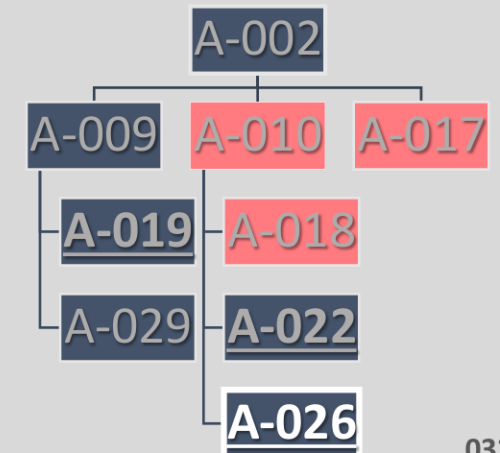
(2021-)

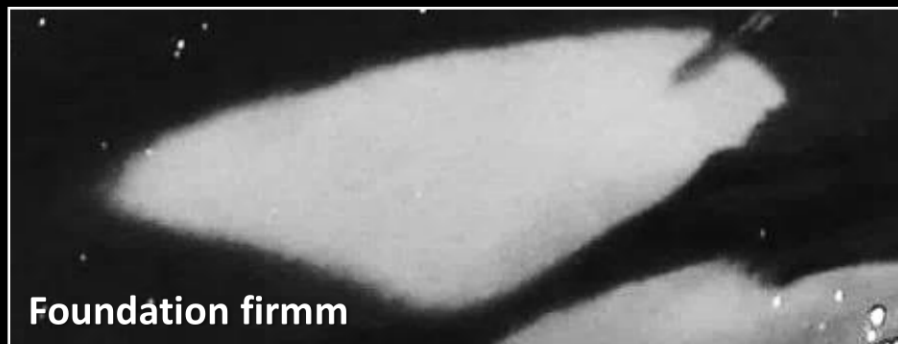
Interact with fishing boats and small motor boats

Community A

Calf without major identifying characteristics. In 2022 it had a small head wound. Seen interacting with small boats.

Eye-patch: minuscule inwards in both sides.





A-027

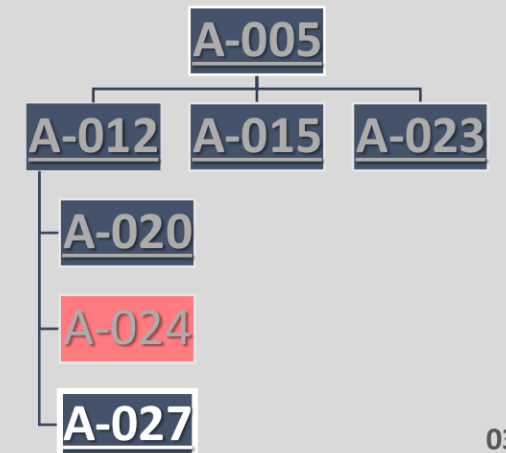
(2021-)

Interact with fishing and sailing
boats

Community A

Calf with a rather pointed dorsal fin.
Since birth, it has been seen
accompanying its mother even
during interactions.

Eye-patch: remarkable crown on
both sides with inward and outward
edges, especially on the left side.





A-028

(2022-)

No interaction
Community A

Calf without identifying features on its dorsal fin or saddle.

Eye-patch: crown of small inward and outward edges on both sides.

A-004

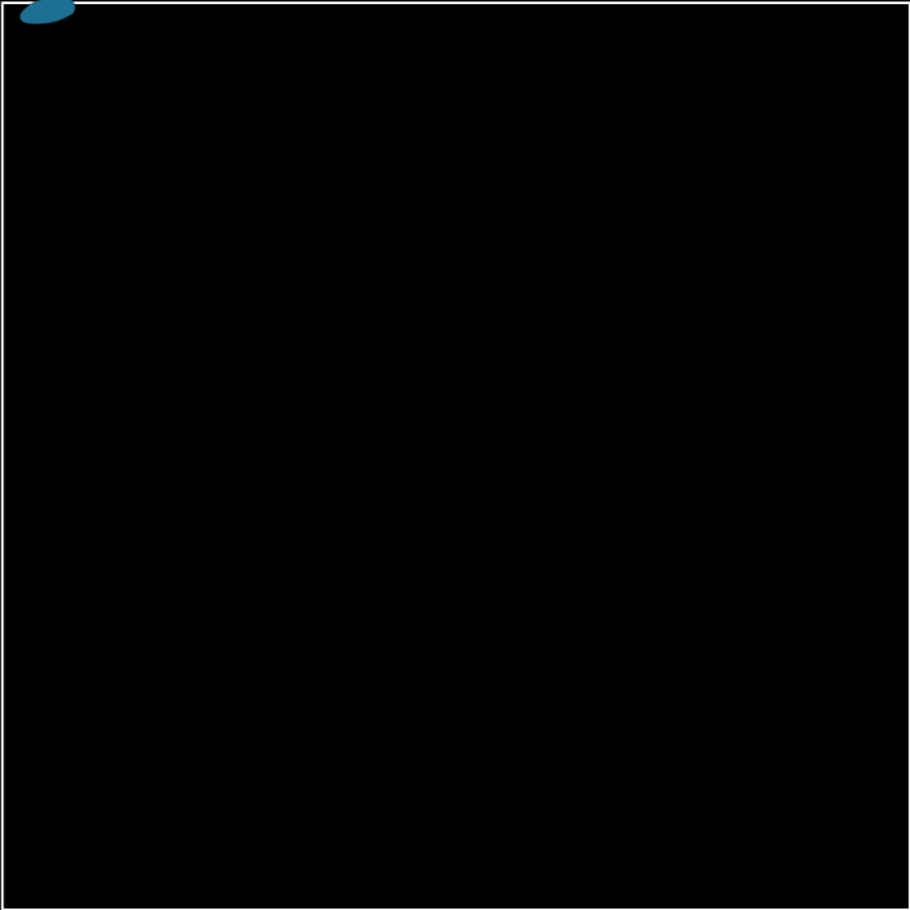
A-008

A-014

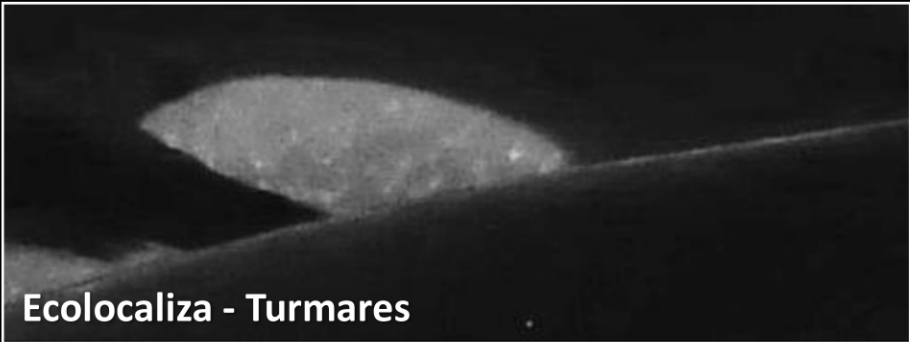
A-021

A-025

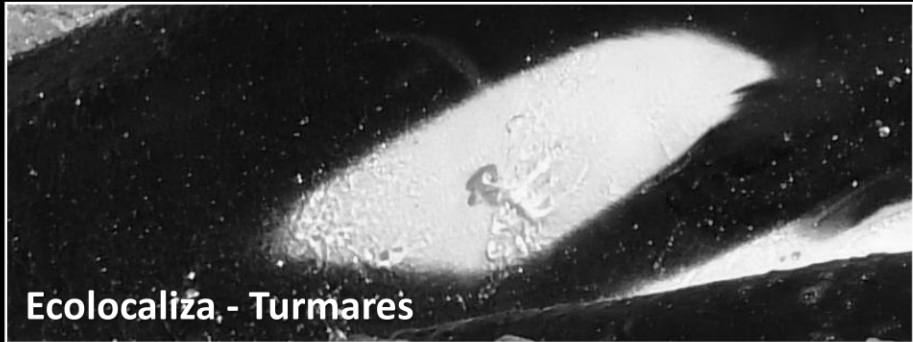
A-028



Ecolocaliza - Turmares



Ecolocaliza - Turmares



Ecolocaliza - Turmares

A-029

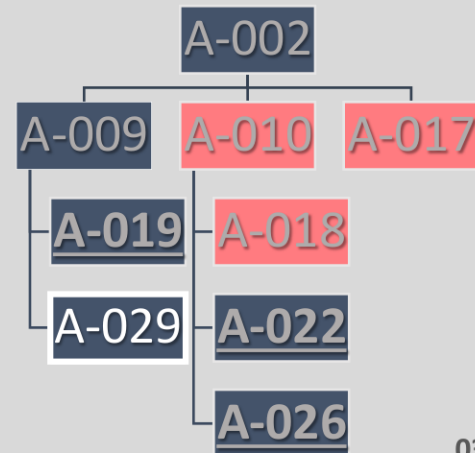
(2022-)

No interaction

Community A

Calf without identifying features on its fin or saddle. It is the last known calf of A-009.

Eye-patch: crown of small inward and outward edges on both sides.



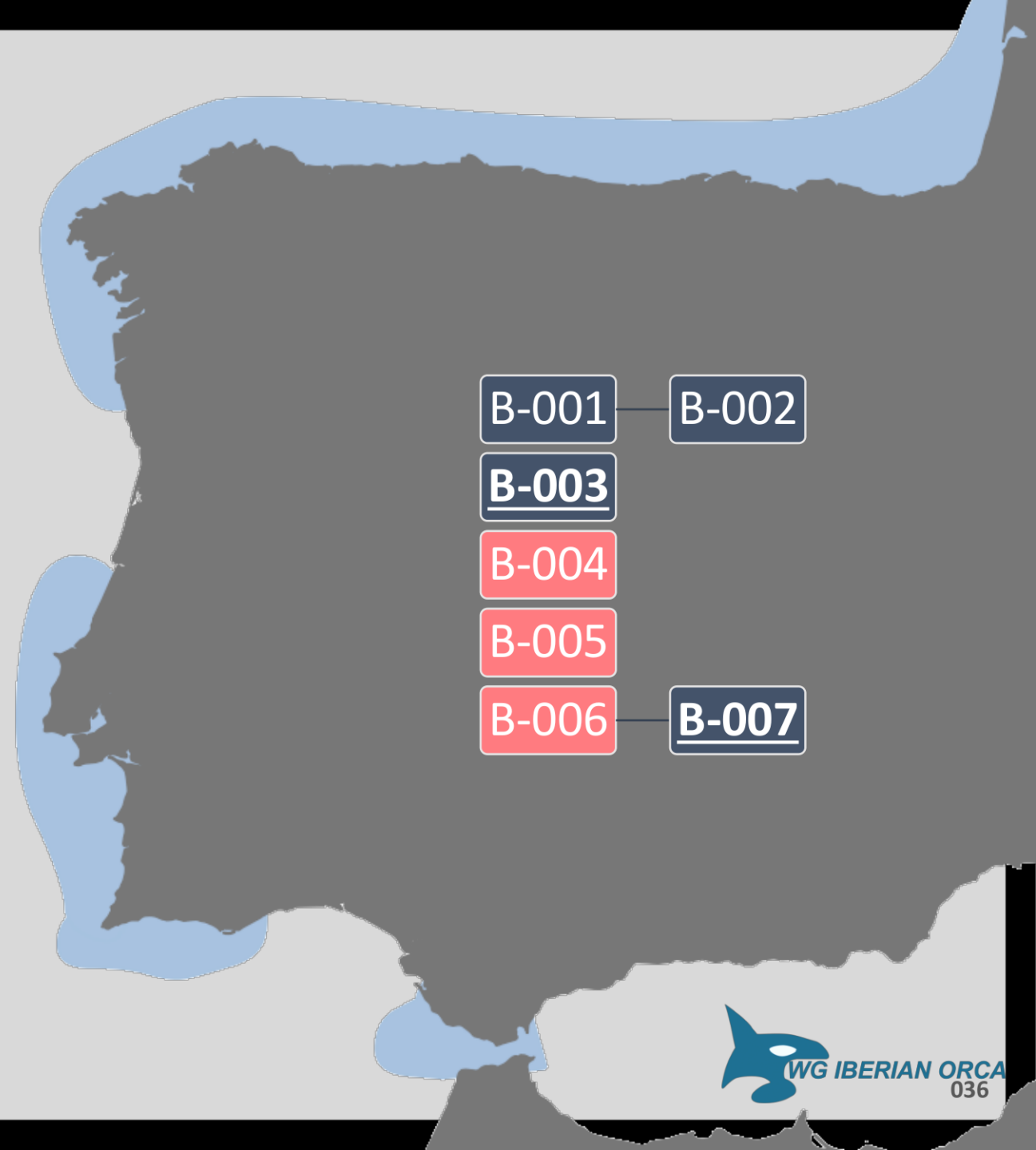
Community B

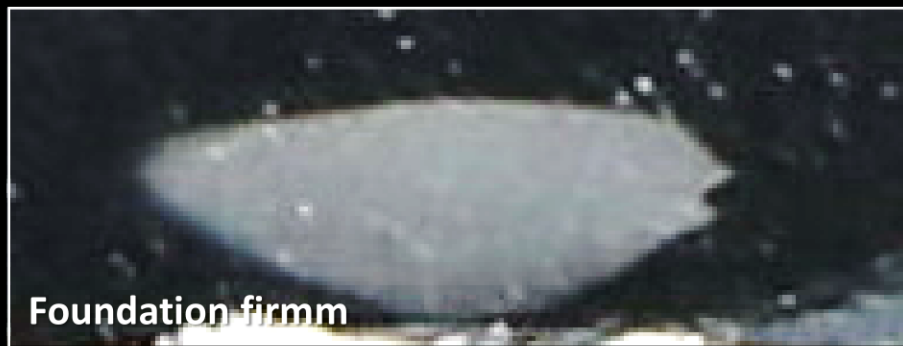
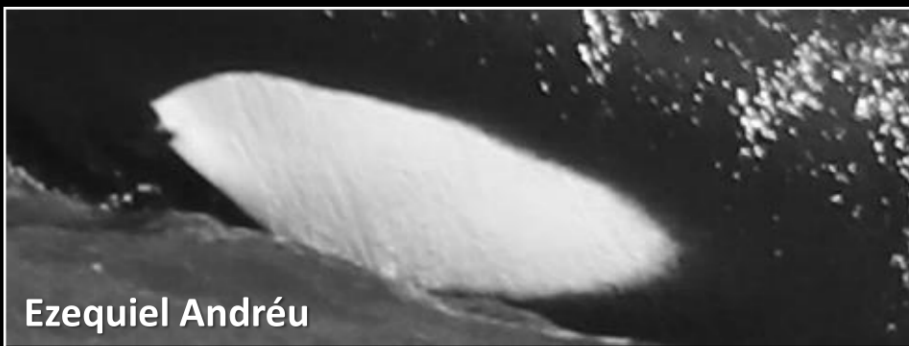
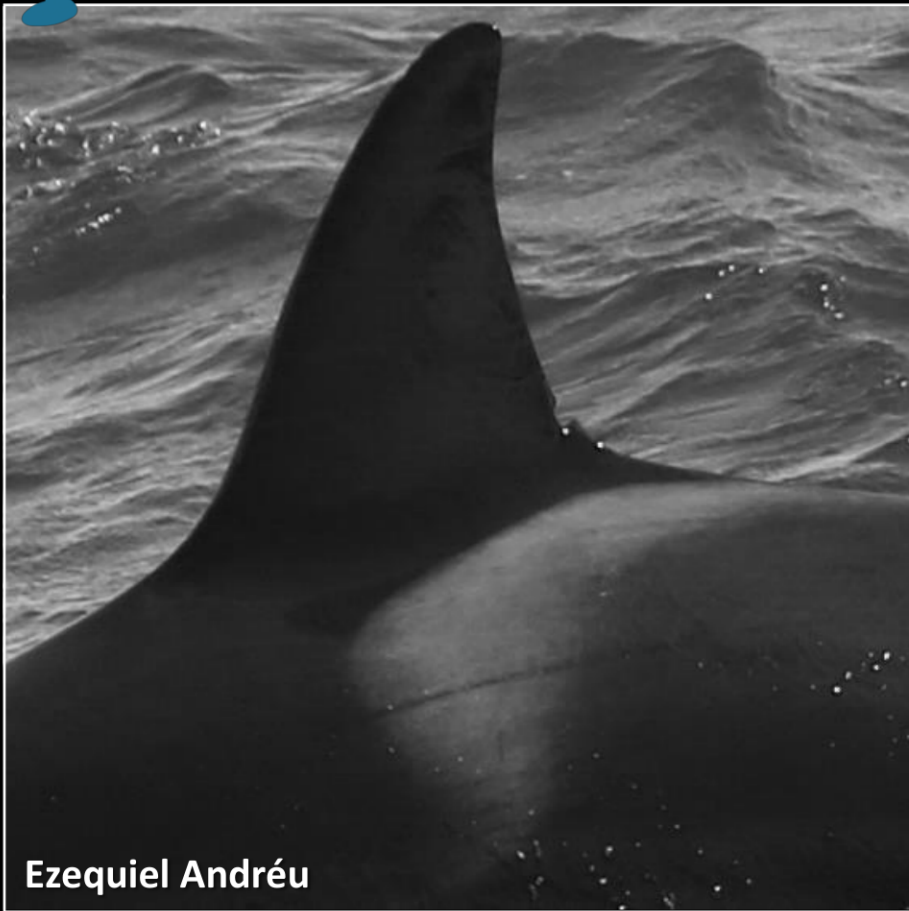
It is another of the longest known orca communities. Their interaction with the tuna fishery in the Strait of Gibraltar has been known since at least the beginning of the century. It consists of different matriline, all of which are related.

They are usually sighted in the area of the Strait of Gibraltar between spring and summer. This community is regularly seen in southern Portugal, Algarve. They have also been sighted along the Iberian coast.

Within this community only individuals B-003 and B-007 have been seen interacting with sailboats since 2021.

This community is closely related to Community A, they are sighted together many times.





B-001 ♀

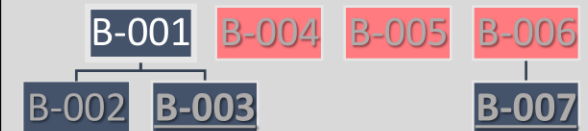
(~1977-)

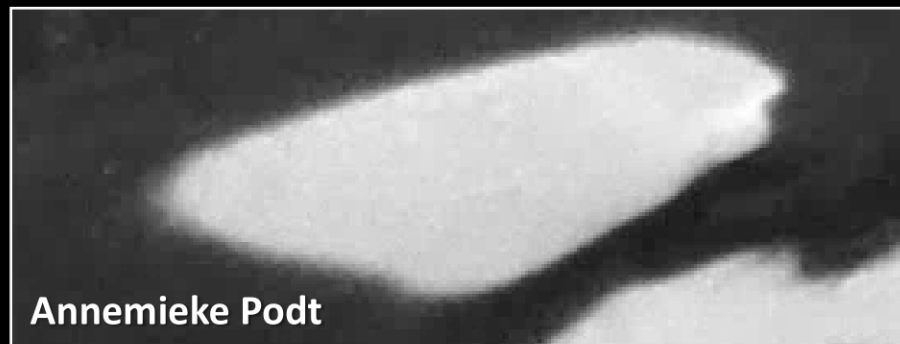
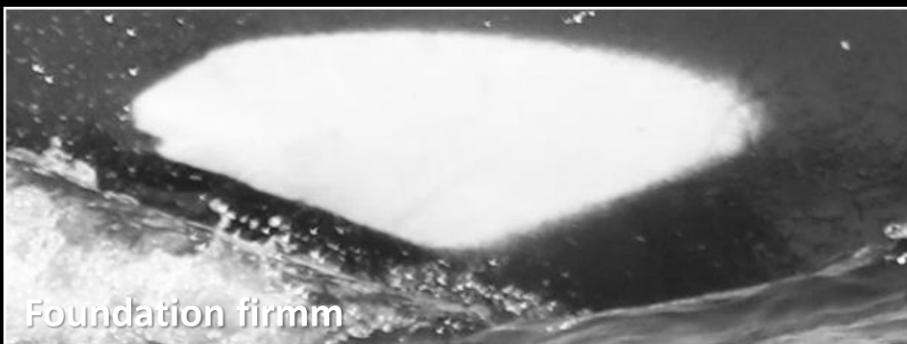
Interact with fishing boats
Community B

Adult female.

Dorsal fin: large indentation in the posterior region of the rear base.

Eye-patch: very characteristic with a great inward (R) and a small inward (L).





B-002



(~1989-)

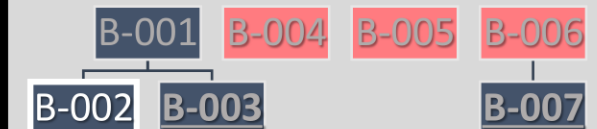
Interact with fishing boats
Community B

Adult male.

Dorsal fin: small ripples on the rear edge.

Saddle patch: highly distinguishable scratches on both sides.

Eye-patch: a big inward in both sides.





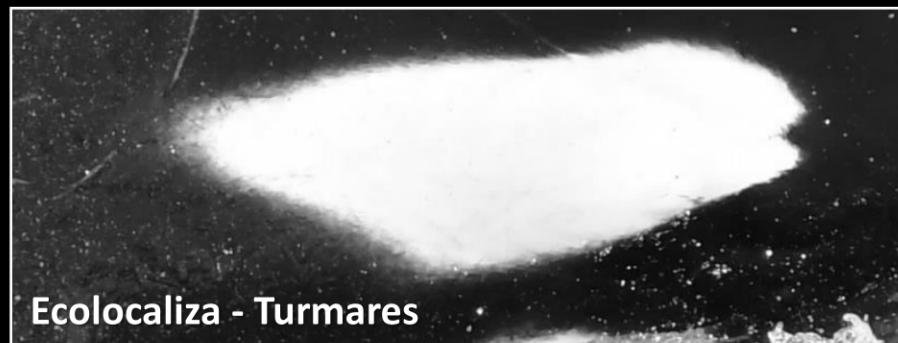
Foundation firmm



Ecolocaliza - Turmares



CEMMA



Ecolocaliza - Turmares

B-003

(~1995-)

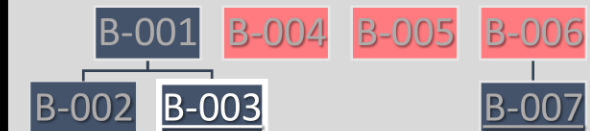
Interact with fishing and sailing
boats

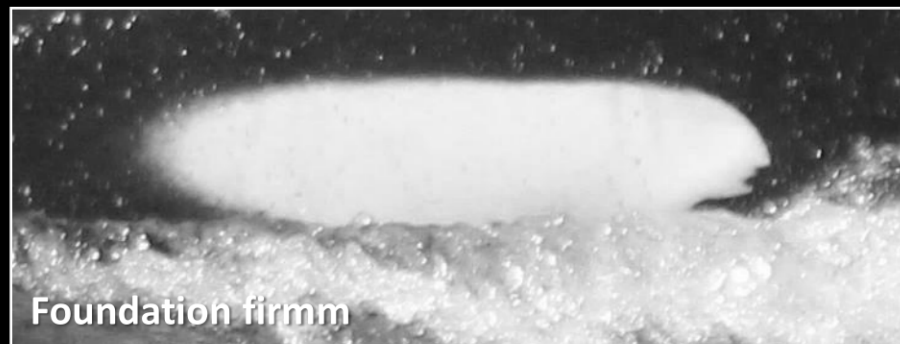
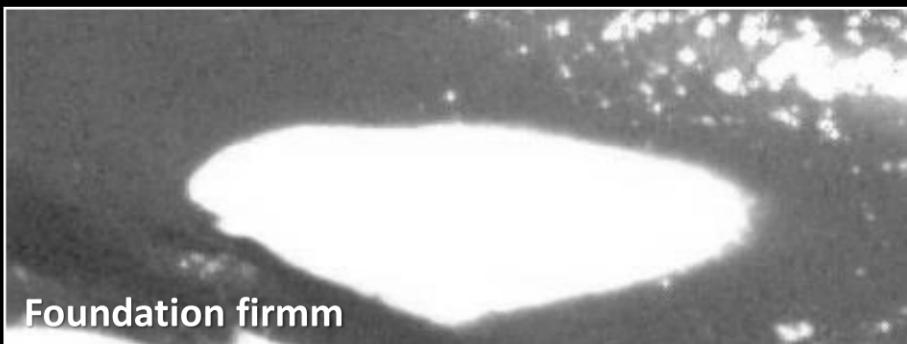
Community B

Adult individual. Since 2022 it has
been seen interacting with
sailboats.

Dorsal fin: with a perpendicular
straight cut at the tip.

Eye-patch: a big inward (R) and a
straight crown (L).





B-004

(~1999- ~2017)

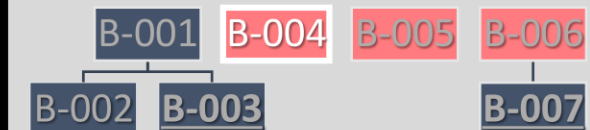
Interact with fishing boats

Community B

Adult individual. This individual has not been observed since 2016.

Dorsal fin: with an oblique cut at the tip.

Eye-patch: A crown of inwards(R) and an outward edge (L).





B-005



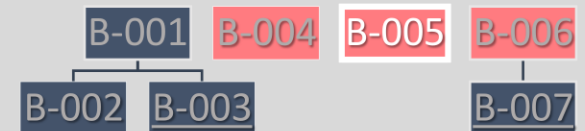
(~1999- ~2017)

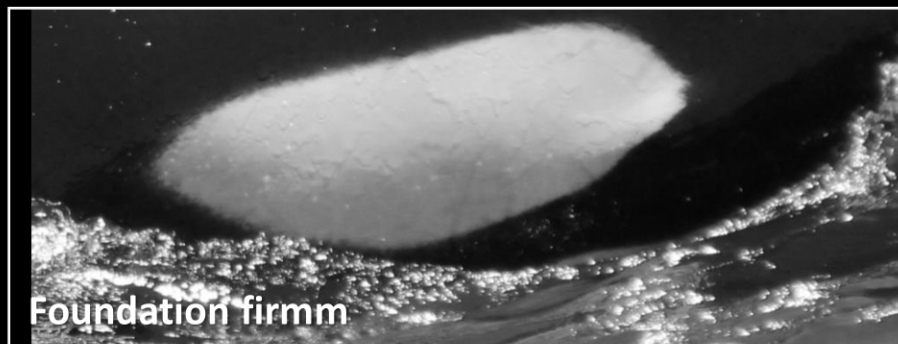
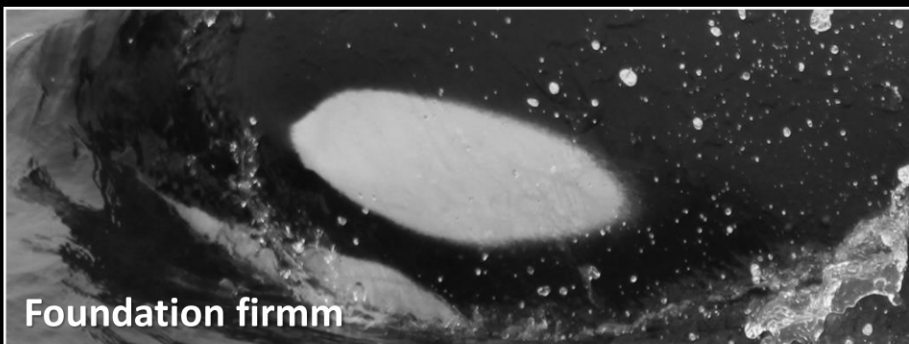
Interact with fishing boats

Community B

Adult male. This individual has not been observed since 2016.

Dorsal fin: drooped or collapsed to the left.





B-006



(~1999- ~2016)

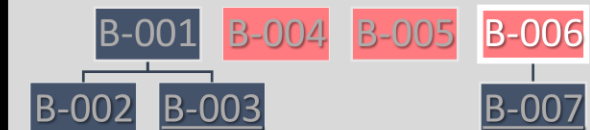
Interact with fishing boats

Community B

Adult female. This individual has not been observed since 2015.

Dorsal fin: with a large notch in the middle of the rear edge and two smaller ones towards the tip.

Eye-patch: small inward (R), and a straight crown (L).





Xavier Vázquez



Xavier Vázquez



Foundation firmm



Sealife Dolphin Watching Lagos

B-007

(2011-)

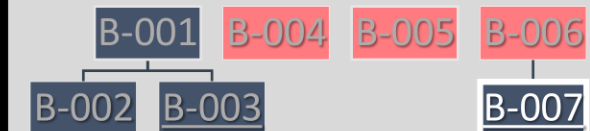
Interact with fishing and sailing boats

Community B

Juvenile individual. Since his mother has not been observed, it has been seen with many different groups. Interacting with sailboats since 2021.

Dorsal fin: a large indentation in the anterior region of the base from 2019, and a notch in the upper third of the trailing edge.

Eye-patch: in both has a big outward edge.



Community C

It is a very small community. They are sporadically observed both in the Strait of Gibraltar and in the south of Portugal.

They have never been observed with calves, nor mixed with other groups of orcas. Moreover, they have never been seen interacting with fishermen or sailboats.





C-001

(~1997-)

No interaction
Community C

Adult individual.

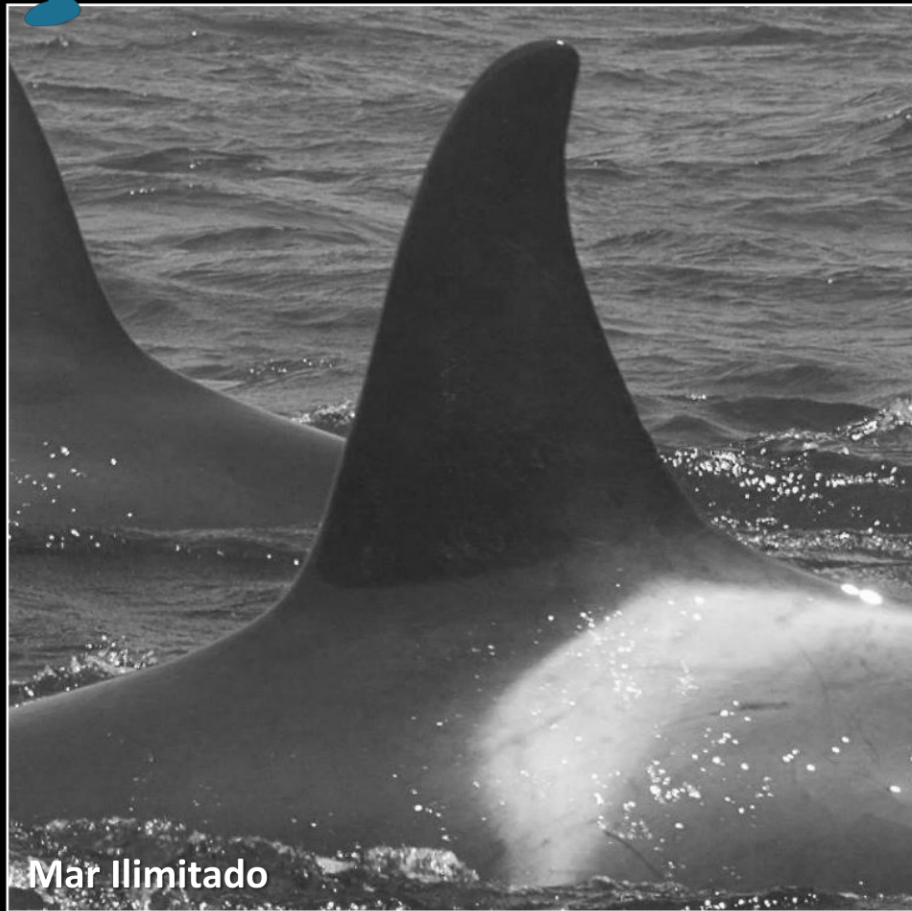
Dorsal fin: three small notches in the rear area of the base.

Eye-patch: crown of inwards (L) and a big inward (R).

C-001

C-002

C-003



C-002

(~1997-)

No interaction

Community C

Adult individual.

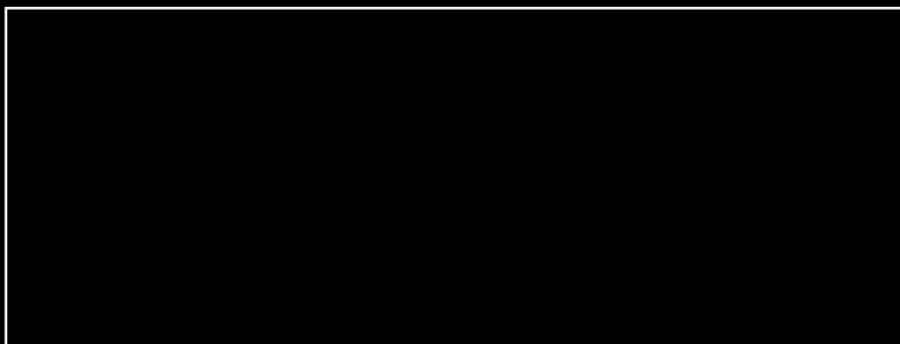
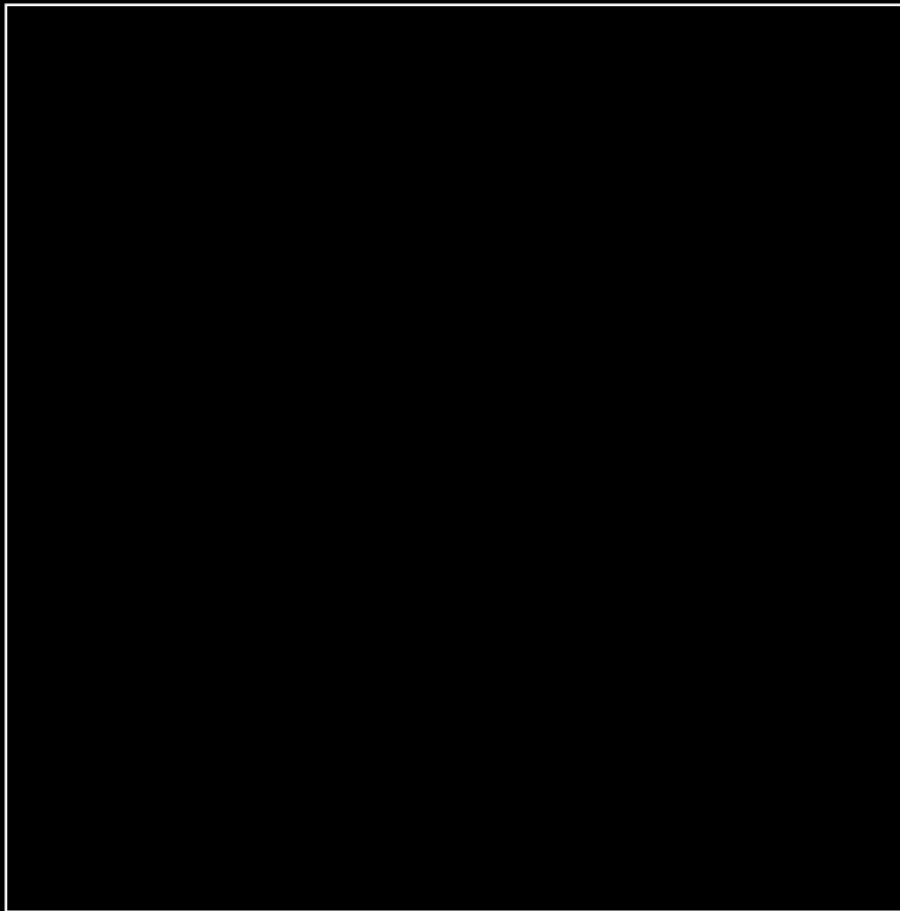
Dorsal fin: broadened and rounded at the tip.

Eye-patch: crown of inwards on both sides.

C-001

C-002

C-003



C-003

(~1997-~2010)

No interaction
Community C

Adult individual.

Dorsal fin: quite widened and a large cut at the base of the dorsal fin.

C-001

C-002

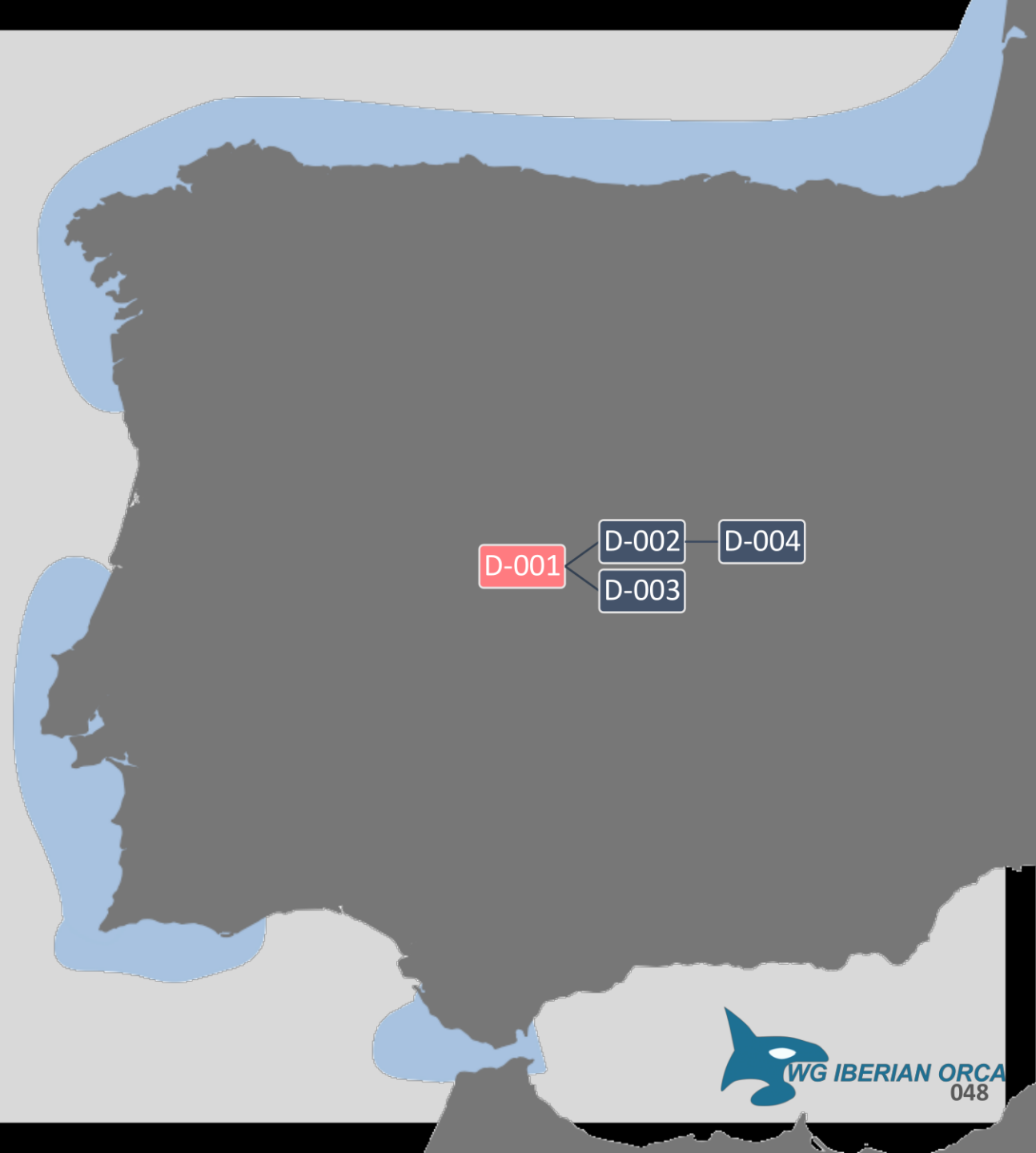
C-003

Community D

It is one of the orca communities most frequently seen in the Bay of Biscay, although they have also been sighted in southern Portugal and in the Strait of Gibraltar.

They have never been seen interacting with fishermen or other vessels.

They have often been observed with other orca communities.





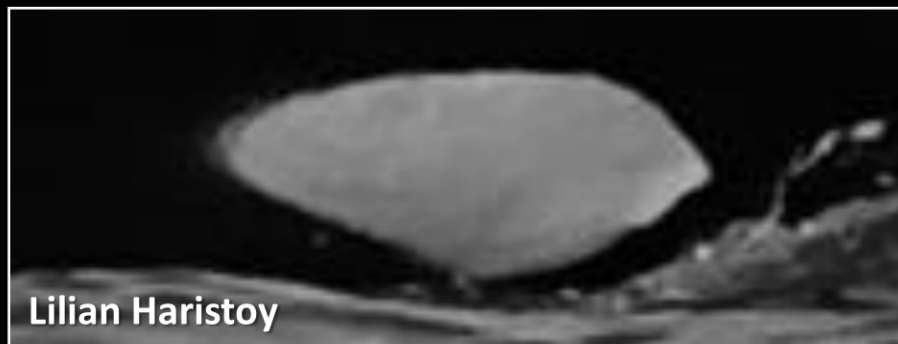
Foundation firmm



Turmares



Mar Ilimitado



Lilian Haristoy

D-001



(~1982-2022)

No interaction

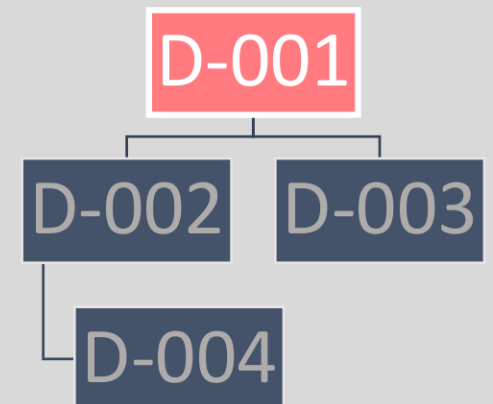
Community D

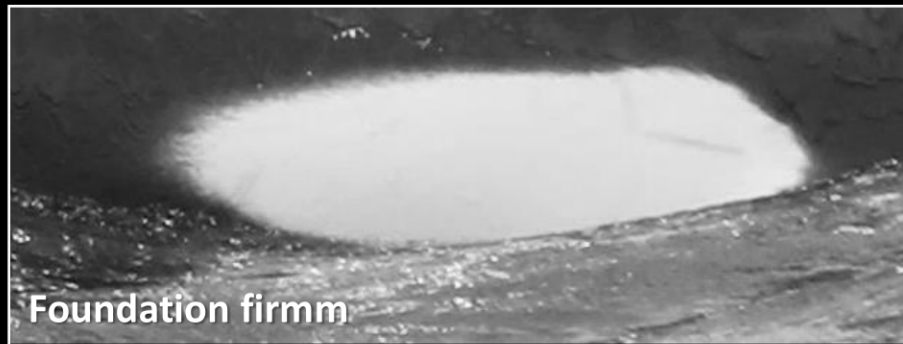
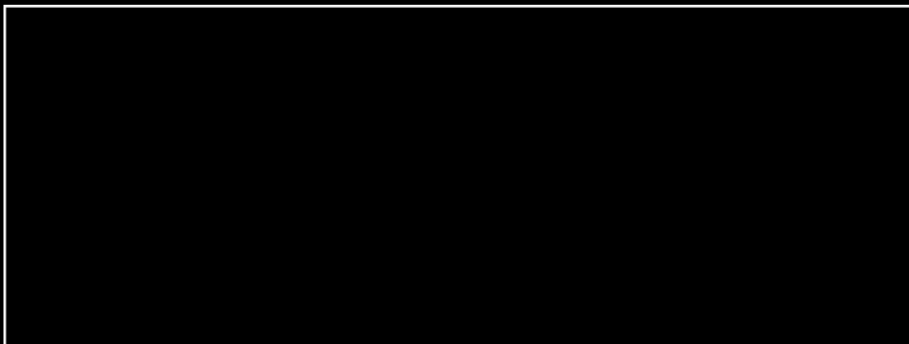
Adult female. In 2022 she stranded alive and eventually died in the Netherlands¹.

Saddle patch: several permanent scratches on both sides.

Eye-patch: crown of inward and outward edges (R).

(1) Utrecht University





D-002



(~2005-)

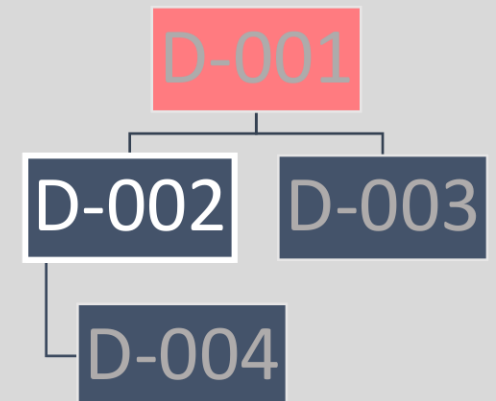
No interaction

Community D

Adult female.

Dorsal fin: an elongated indentation in the upper third.

Eye-patch: a small inward edge (R).





D-003



(~1997-)

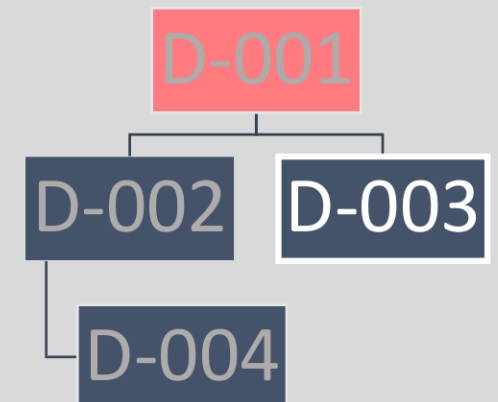
No interaction

Community D

Adult male.

Dorsal fin: a notch in the upper third and an oblique cut in the tip.

Eye-patch: an outward edge (R).





Sealife Dolphin Watching Lagos



Sealife Dolphin Watching Lagos



Turmares



Sealife Dolphin Watching Lagos

D-004

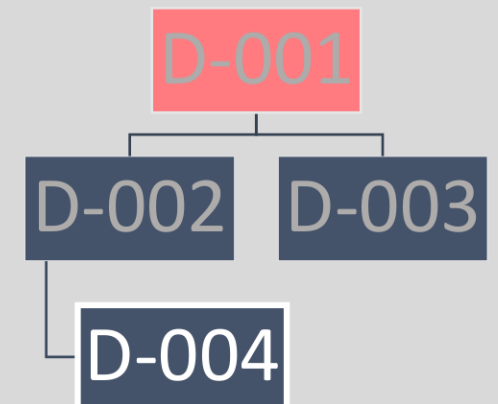
(2017-)

No interaction
Community D

Young individual.

Saddle patch: temporal scratches.

Eye-patch: minuscule inward edges.



Community E

It is a very small community, made up of a single matriline, sporadically observed both in the Strait of Gibraltar and in the south of Portugal.

They are often observed with other orca communities. They have never been seen interacting either with fishermen or with sailboats.





E-001



(~1985-)

No interaction

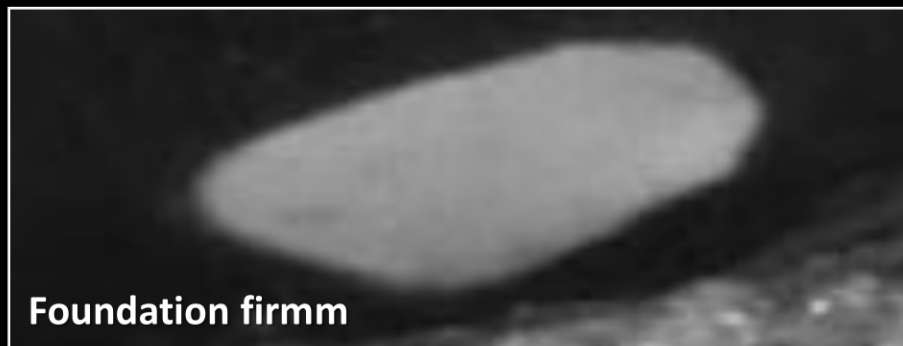
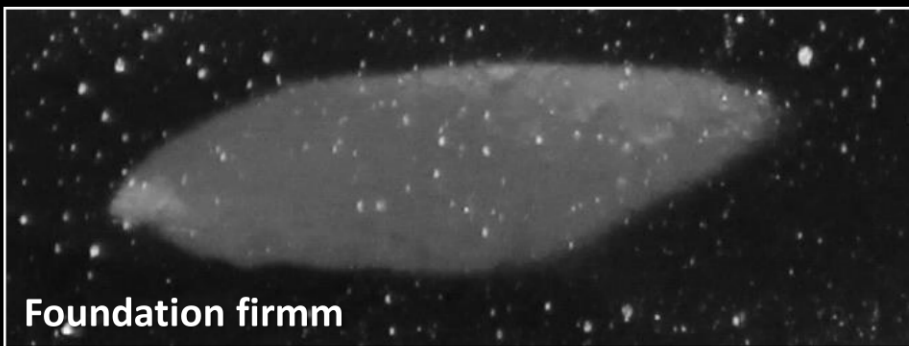
Community E

Adult female.

Dorsal fin: four notches along the trailing edge of the fin.

Eye-patch: small outward edges (L).





E-002



(~1997-)

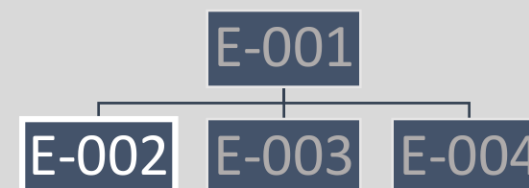
No interaction

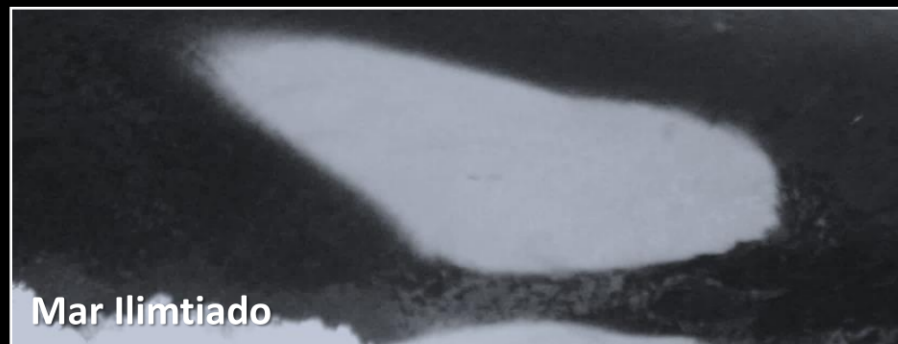
Community E

Adult male.

Dorsal fin: since 2018, the upper region is skewed to the left.

Eye-patch: crown of small inward edges.





E-003



(2013-)

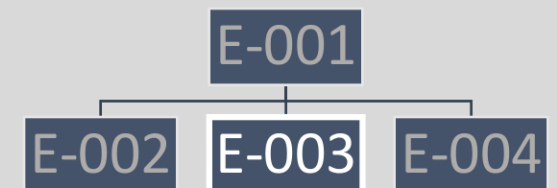
No interaction

Community E

Young male.

Dorsal fin: with two small notches in the upper third.

Eye-patch: presence of small outward edges (R).





E-004

(2017-)

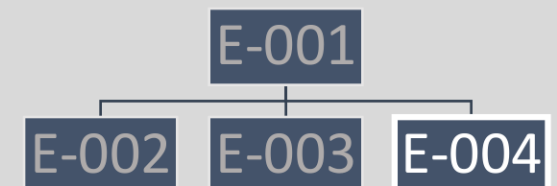
No interaction

Community E

Juvenile individual usually with many temporary scratches. No identifying features on the fin.

Saddle patch: several scratches that do not appear permanent.

Eye-patch: small inward edges.



Community F

A very small community, consisting of a single matriline, they are frequently observed both in the Strait of Gibraltar and in southern Portugal. They are sometimes observed in Galicia and the Bay of Biscay.

They are often observed with other orca communities. Although they are sometimes seen close to fishermen, so far they have not been seen directly taking tuna from their lines. Within this community, two juveniles and its mother have been seen interacting directly with sailboats.





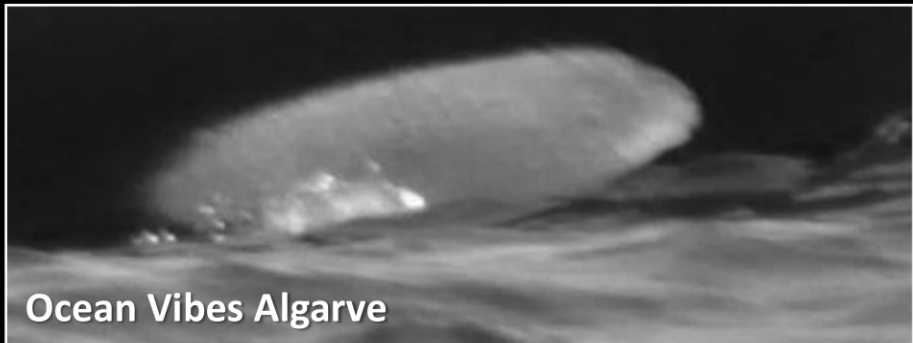
Ecolocaliza - Turmares



Turmares



Ecolocaliza - Turmares



Ocean Vibes Algarve

F-001



(~1993-)

Interact with sailboats

Community F

Adult female. Since 2020 she has been observed close to sailing vessels, and already in 2022 interacting directly with them.

Dorsal fin: with a large notch at the tip.

Eye-patch: only having small inward edges.





Ocean Vibes Algarve



Turmares



Ecolocaliza - Turmares



Ezequiel Andréu

F-002



(~2005-)

No interaction

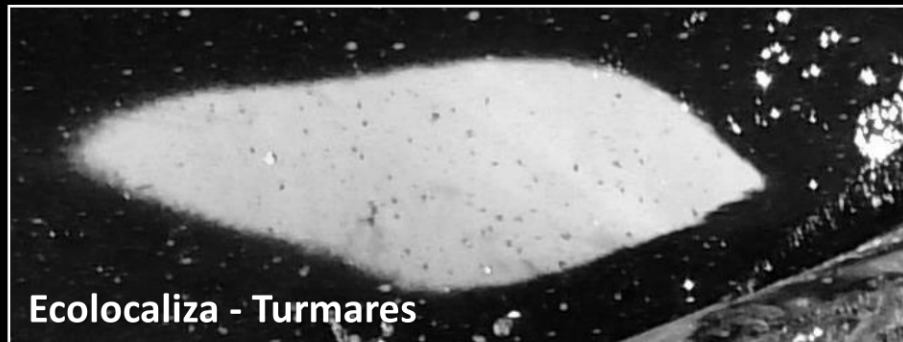
Community F

Adult male.

Dorsal fin: with a slight curvature at the tip.

Eye-patch: crow on inward edges (L). One inward edge (R).





F-003



(2012-)

Interact with sailboats
Community F

Juvenile male. Since 2020 Interact with sailboats . In 2020 he had a large head wound, and in 2022 he had another wound behind his dorsal fin.

Dorsal fin: two small notches.

Eye-patch: minuscule inward edges.



F-001

F-002

F-003

F-004

F-005



Ocean Vibes Algarve



Ecolocaliza - Turmares



Sealife Dolphin Watching Lagos



Turmares

F-004



(~2017-)

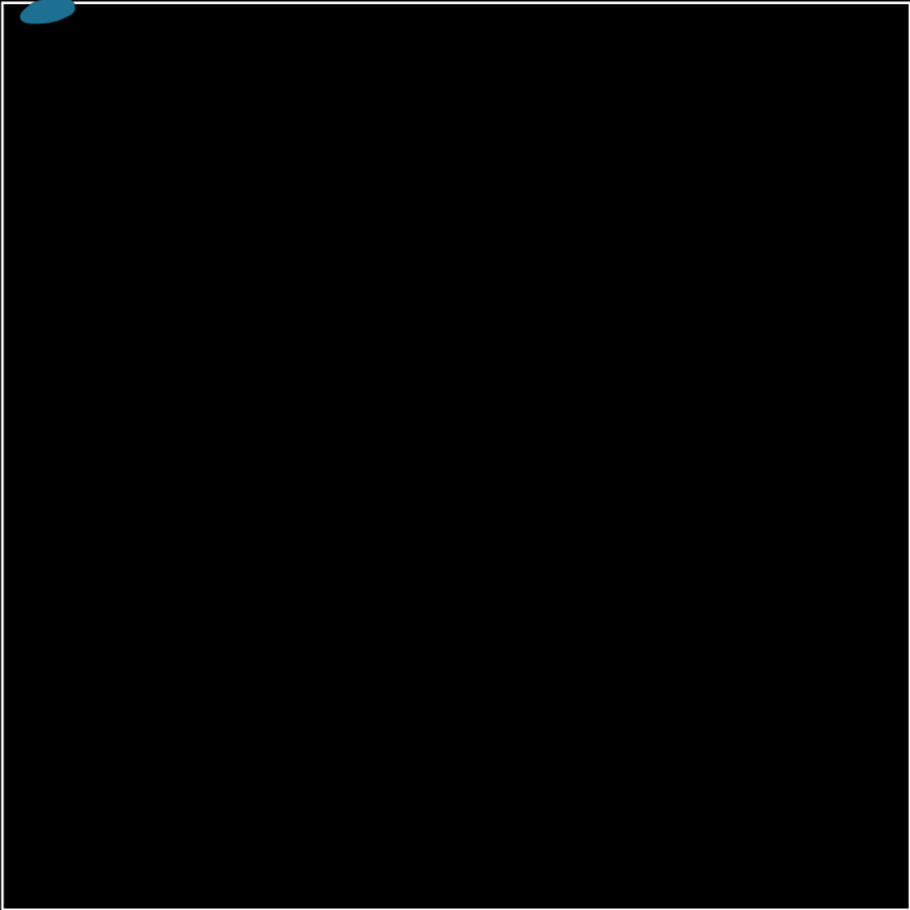
Interact with sailboats

Community F

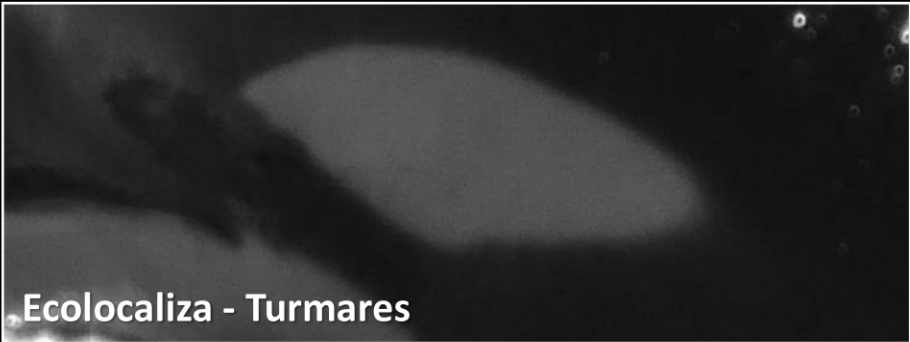
Juvenile female. No identifying features on both dorsal fin and saddle.

Eye-patch: minuscule inward edge(R). Crown of inward edges (L).

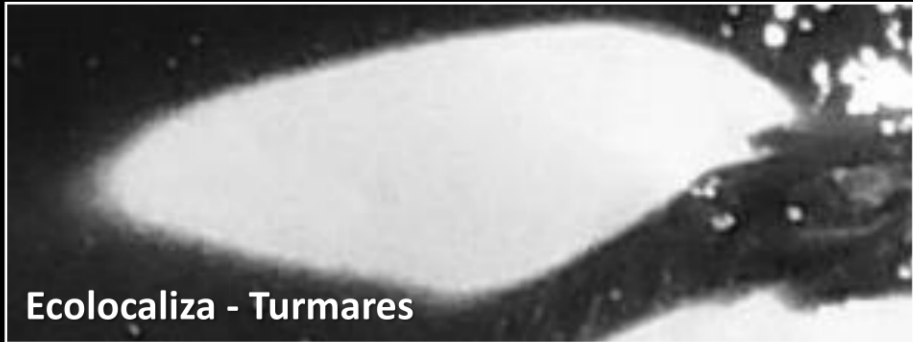




Ecolocaliza - Turmares



Ecolocaliza - Turmares



Ecolocaliza - Turmares

F-005

(2022-)

No interaction
Community F

Juvenile individual. No identifying features on both dorsal fin and saddle patch.

Eye-patch: inward edge(R).



No community

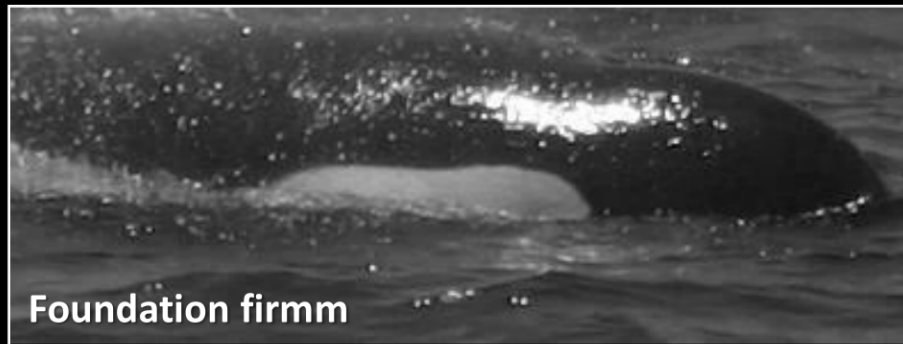
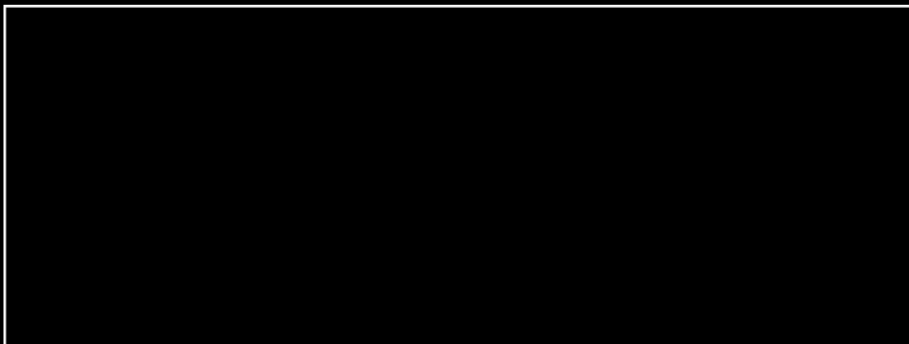
Several groups of orcas that have been seen on so few occasions that it has not been possible to assign them to a specific community.

Apart from X-002, none of them interact with either fishermen or sailboats.

Animals that have been observed together have been grouped by letters.

There is a mother with its calf, but the relationship between individuals is generally unknown.





X-001



(~1990 -)

No interaction

No community

Adult male.

Dorsal fin: small notch on the tip.

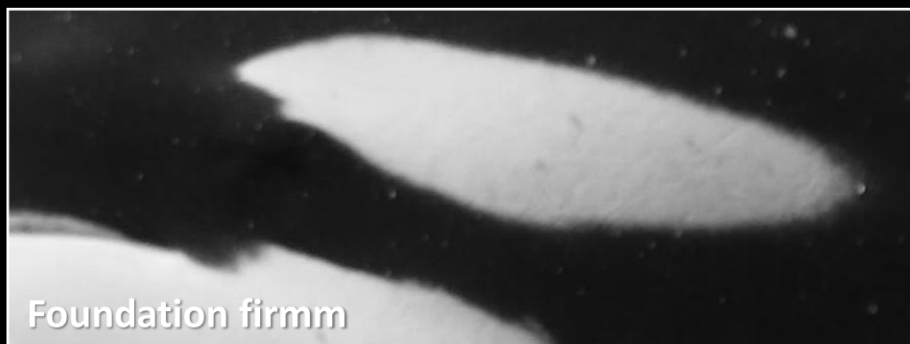
Saddle patch: horizontal scratches (R).



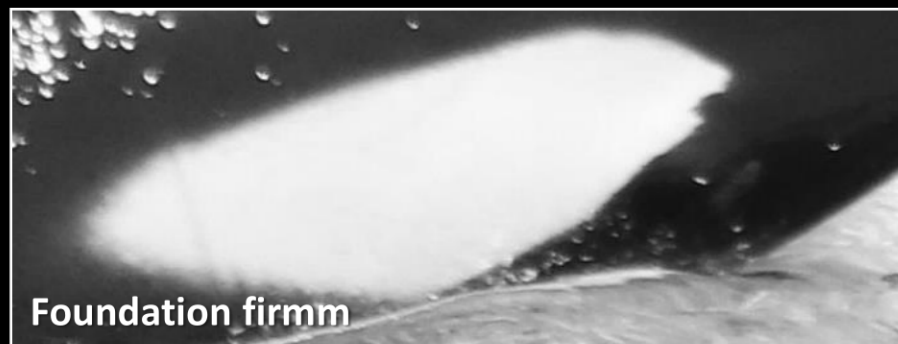
Ezequiel Andréu



Ezequiel Andréu



Foundation firmm



Foundation firmm

X-002

(~1990 -)

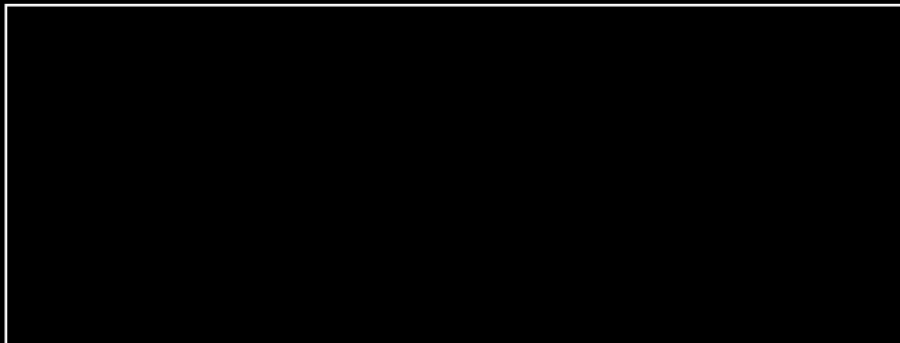
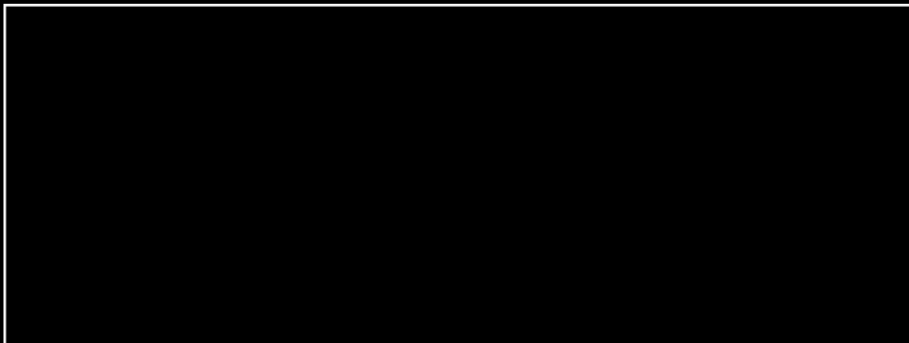
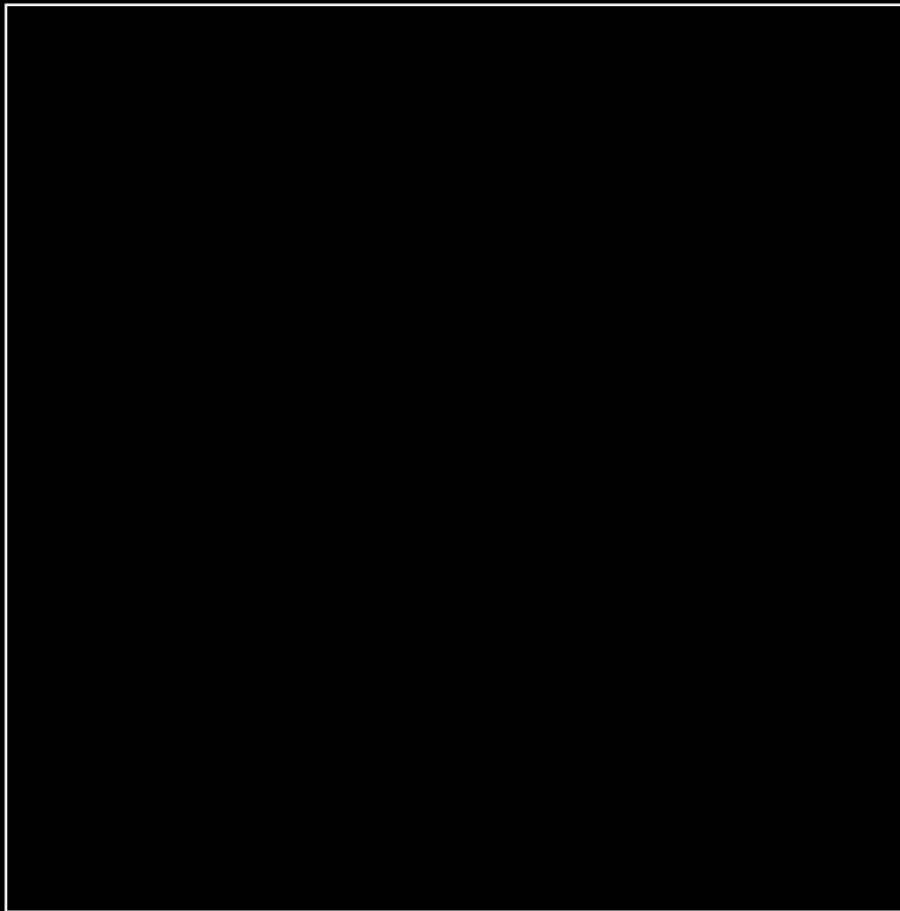
Interact with sailboats

No community

Juvenile individual. It has been seen mainly with communities A, B and F. Since 2020, it has been seen interacting with sailboats.

Dorsal fin: with several notches on the edge.

Eye-patch: rounded inward edge (R) and an outward edge (L).



XA-001

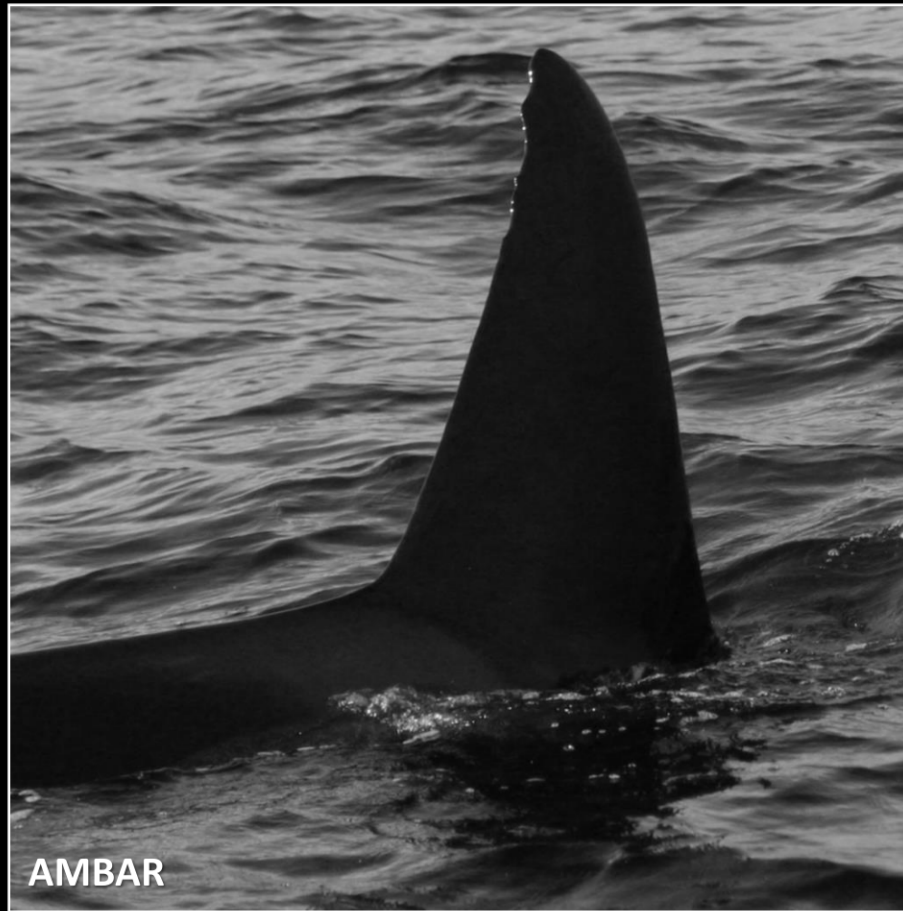
(~1992 -)

No interaction

No community

Adult individual.

Dorsal fin: with a rectangular notch at the tip.



XA-002 ♂

(~1989 -)

No interaction

No community

Adult male.

Dorsal fin: several notches in the upper third.



XA-003

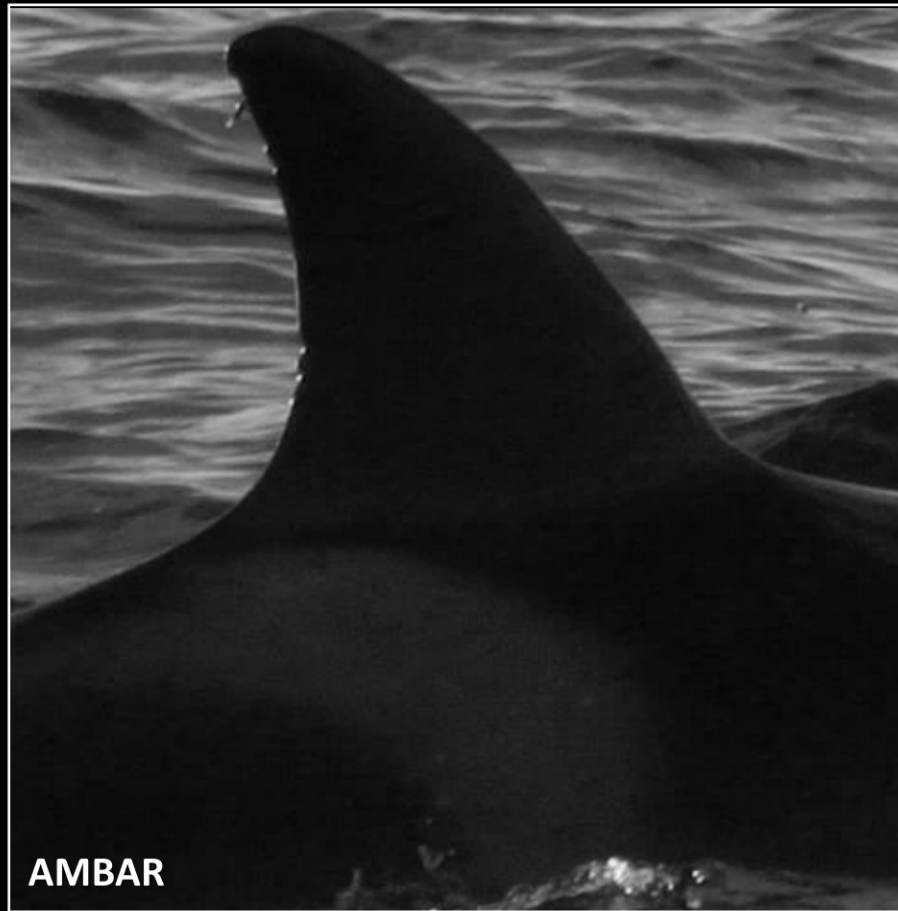
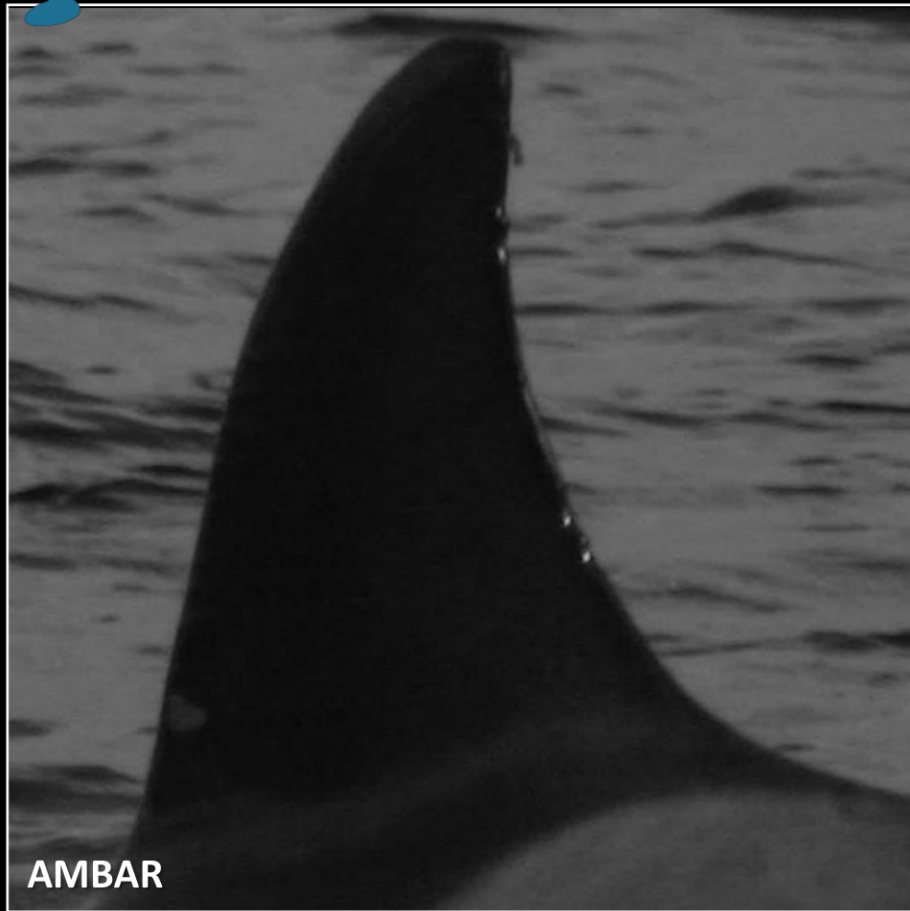
(~1992 -)

No interaction

No community

Adult individual.

Saddle patch: horizontal scratch (R).



XA-004

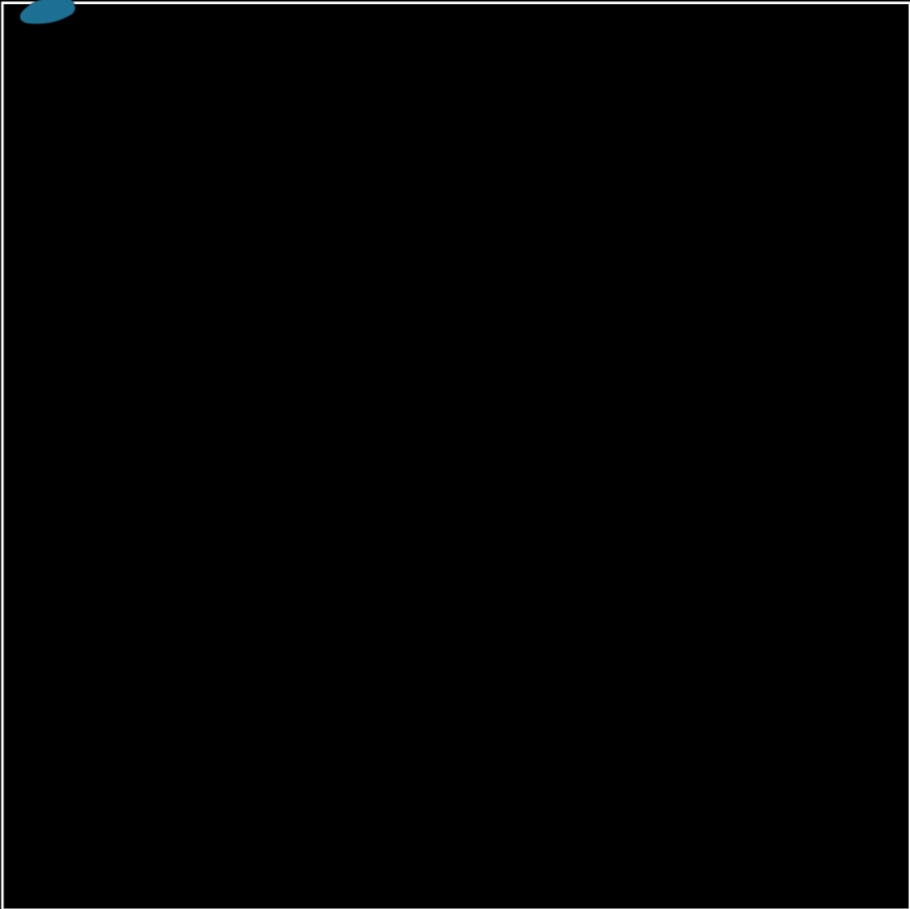
(~1992 -)

No interaction

No community

Adult individual.

Dorsal fin: several small notches in the upper and lower third of the rear edge.



AMBAR



XA-005

(~1992 -)

No interaction

No community

Adult individual.

Dorsal fin: severed in the lower half.

XA-006

(~1992 -)

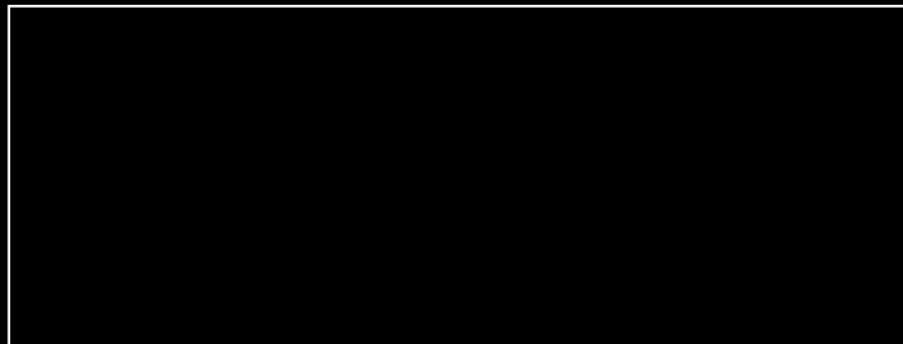
No interaction

No community

Adult individual.

Dorsal fin: large notch in the middle of the trailing edge.





XB-001

(~2004 -)

No interaction

No community

Adult individual.

Dorsal fin: notch in the lower third of the posterior edge, and a cut in the anterior region of the tip.



WG IBERIAN ORCA

IBERIAN ORCA PHOTO-ID CATALOGUE



Jon Hidalgo



Jon Hidalgo

XB-002

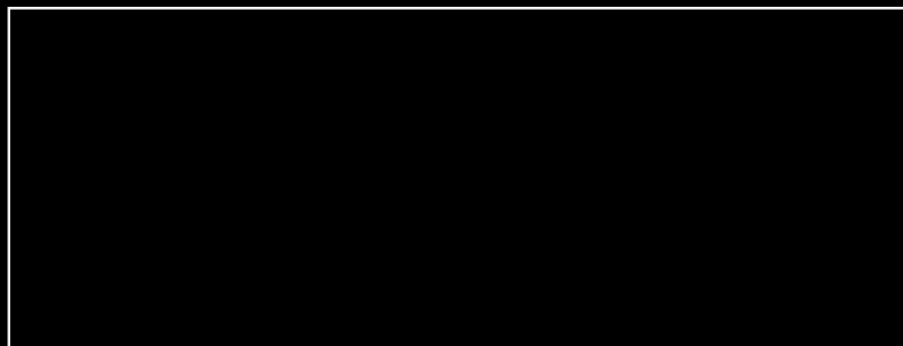
(~2004 -)

No interaction

No community

Adult individual.

Dorsal fin: with a rectangular notch in the middle area of the trailing edge.



XC-001



(~2004 -)

No interaction

No community

Adult female.

Saddle patch: scratches on the saddle that appear permanent.

XC-001

XC-002



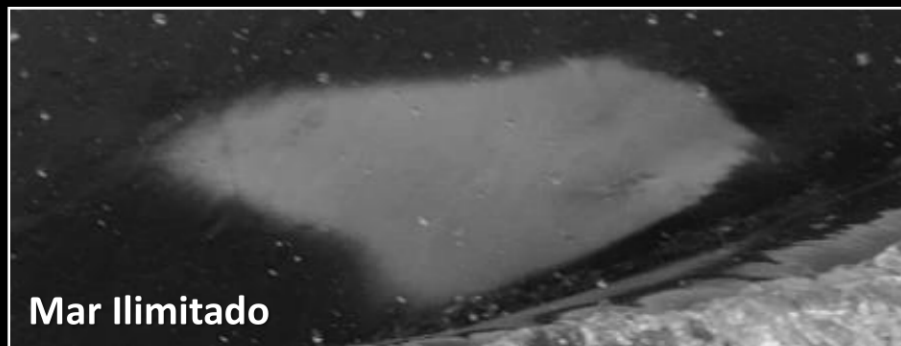
Sealife Dolphin Watching Lagos



Sealife Dolphin Watching Lagos



Sealife Dolphin Watching Lagos



Mar Ilimitado

XC-002

(~2016 -)

No interaction

No community

Juvenile individual.

Dorsal fin: with the tip of the fin cut off.

Saddle patch : without permanent marks.

Eye-patch: crown of inward edges (R).

XC-001

XC-002

IBERIAN ORCA PHOTO-ID CATALOGUE



Ocean Vibes Algarve

XD-001



(~2007 -)

No interaction

No community

< Left

Adult male

Dorsal fin: very wide at the base.

XD-002



(~2007 -)

No interaction

No community

Right >

Adult male.

Dorsal fin: several notches on the trailing edge.

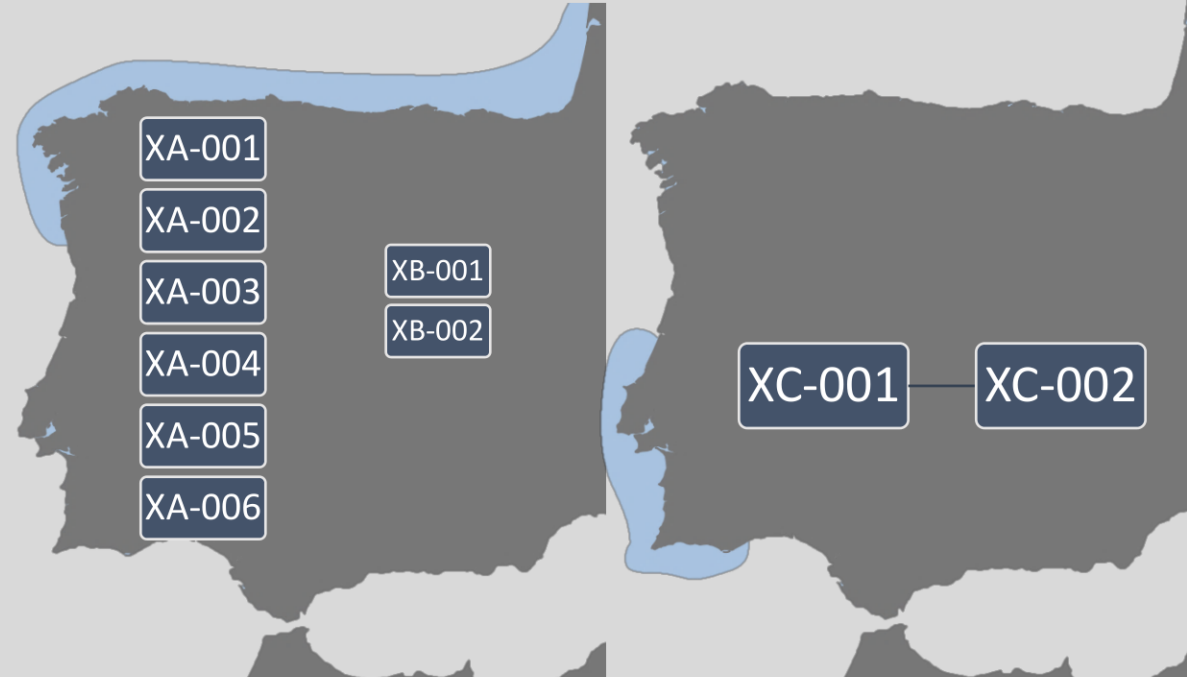
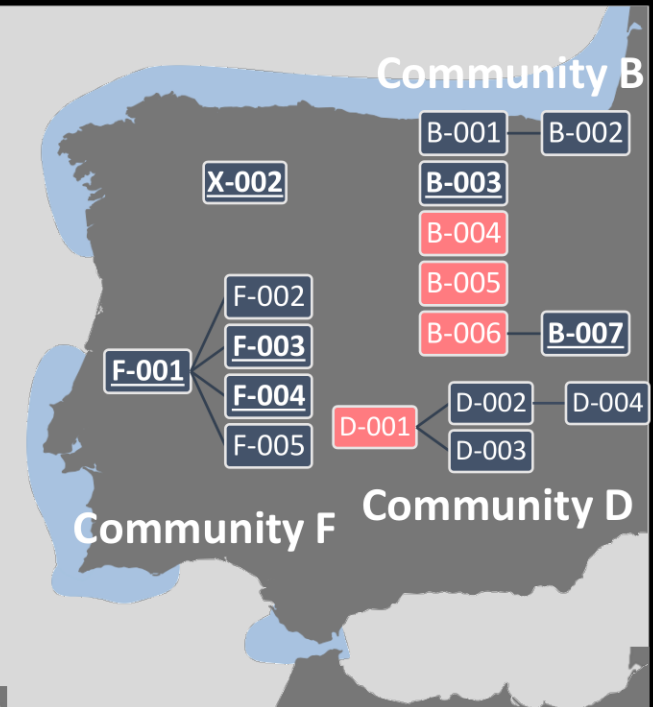
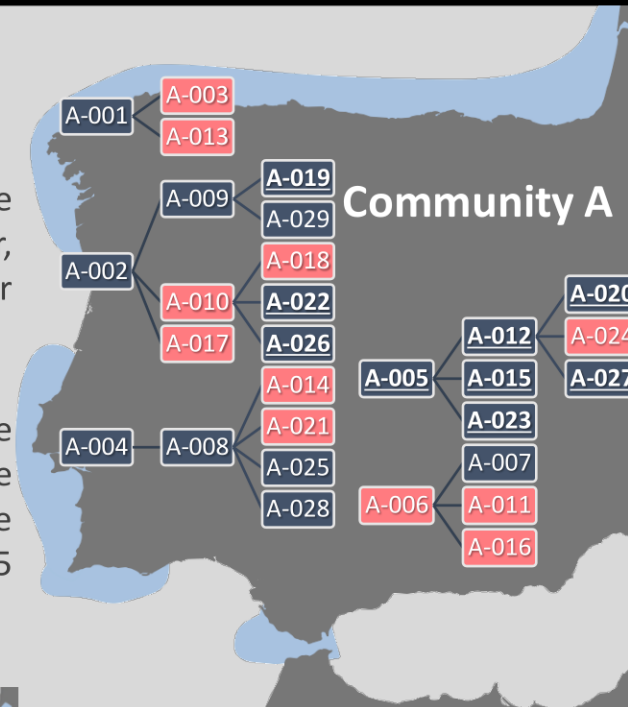


Ocean Vibes Algarve

SUMMARY

In this catalogue 6 orca communities are defined, generally these communities are observed along the whole Iberian Atlantic coast. However, both Community C and Community E are only seen in the Strait of Gibraltar and southern Portugal.

There are a number of individuals without an assigned community that are probably transient individuals on the peninsula, and therefore should not be counted as belonging to the Iberian orca subpopulation. Therefore the current census in 2023 of this subpopulation consists of at least 35 individuals, of which only 18 individuals are considered adults.



COLLABORATING ENTITIES



Collaborating persons

Andrew Watson
Annemieke Podt
Alejandro Onrubia
Armando Araez Andugar
Catarina Gomes
Charles Terwindt
Cristina Martín Bernal
David Alarcón
Ezequiel Andréu
Fer Goytre
German Garrote
Janni Roessevold
Javier Elorriaga
João Nuno Gonçalves
Jon Hidalgo
José Antonio Vázquez Bonales
Luis Barrios
Lilian Haristoy (www.lilianharistoy.com)
Mario Morcillo
Paula Camenzind
Pauline Gauffier
Philippe Verborgh
Raül Luna
Teo Todorov
Tobias Arnold
Mayte Louzano
Yeray Seminario
Xabier Vázquez

In Memoriam...

to two great lovers and defenders of the
Iberian orcas

David Alarcón



Mario Morcillo